

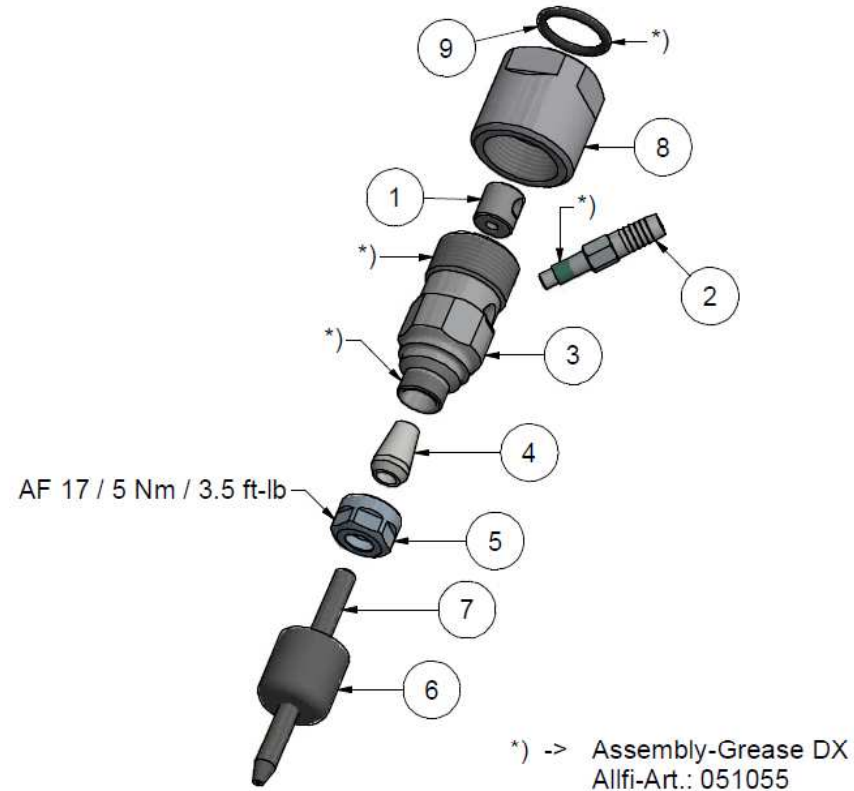
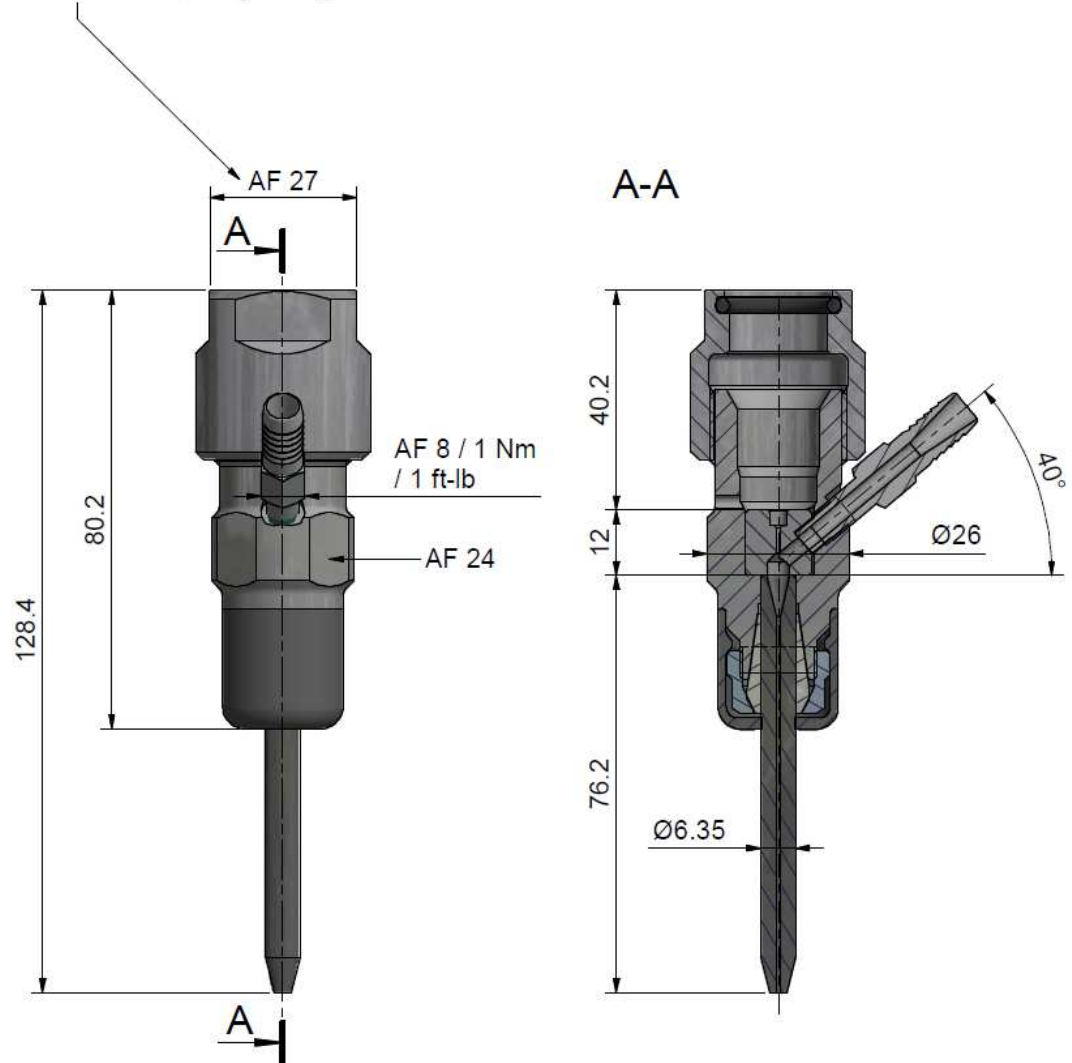
Assembling - Maintenance

This drawing is appendix A of the installation and maintenance manual "Abrasive Cutting Head".

Complete installation and maintenance instruction refer to QR-Code or:
<https://www.allfi.com/en/services/downloads/product-manuals/>



- Pressure relief holes may not be covered or closed.
- Assembly tool 881610 for assembly the Mixing chamber
- Suitable orifices and associated torque:
 4150 bar / 60,000 psi - Type 94 / 40Nm / 30 ft-lb
 6200 bar / 90,000 psi - Type 94-S1 / 55Nm / 40 ft-lb



*) -> Assembly-Grease DX
 Allfi-Art.: 051055

Item	Qty	Description	Part-Number	Comments	Weight
1	1	Mixing chamber	950813	Wear part	17 g
2	1	Pipe socket	950812		8.4 g
3	1	Casing CL type IV	950814		116.3 g
4	1	Chuck	000301		6.2 g
5	1	Clamping Nut	000090		12.1 g
6	1	Protection Cap	950815		2.4 g
7	1	Focussing tube		Not included	17.6 g
8	1	Nut	950816		89.1 g
9	1	O-Ring D=17.86 x 2.62	010149	B)	0.3 g

General tolerances ISO 2768-1 mK Designs and drawings created and produced by the contractor are the contractor's intellectual property and may only be used for the purposes of the order. Weight 0.27 kg

Amendment:	Replace for	
A) Drehmomente Pos. 8 angepasst, 05.07.2018 AM	Replaced by	-
B) 0062, O-Ring 010149 neu, 17.07.2020 AM	Drawn	07.11.2017 AM
Abrasive Cutting Head Centerline Type IV	Scale	1 : 1
	Checked	28.11.2017 RB
	Release	22.05.2018 BT
	Index-release	22.07.2020 RB

allfi
 Components

ALLFI AG - RIEDENMATT 1 - CH-6370 STANS
 PHONE +41(0)41-618 05 05
 E-MAIL: sales@allfi.com <http://www.allfi.com>

Max. 6200 bar / 90,000 psi

950880

Index	Sheet- No.	2
B	No. of sheets	2