

Assembling - Maintenance

This drawing is appendix A of the installation and maintenance manual "HP-Filter angle 9_16".

Complete installation and maintenance instruction refer to QR-Code or:

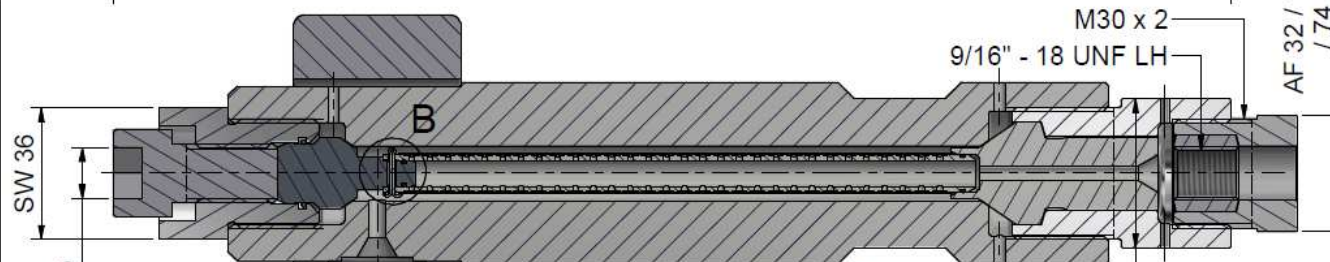
<https://www.allfi.com/en/services/downloads/product-manuals/>

- Pressure relief holes may not be covered or closed.

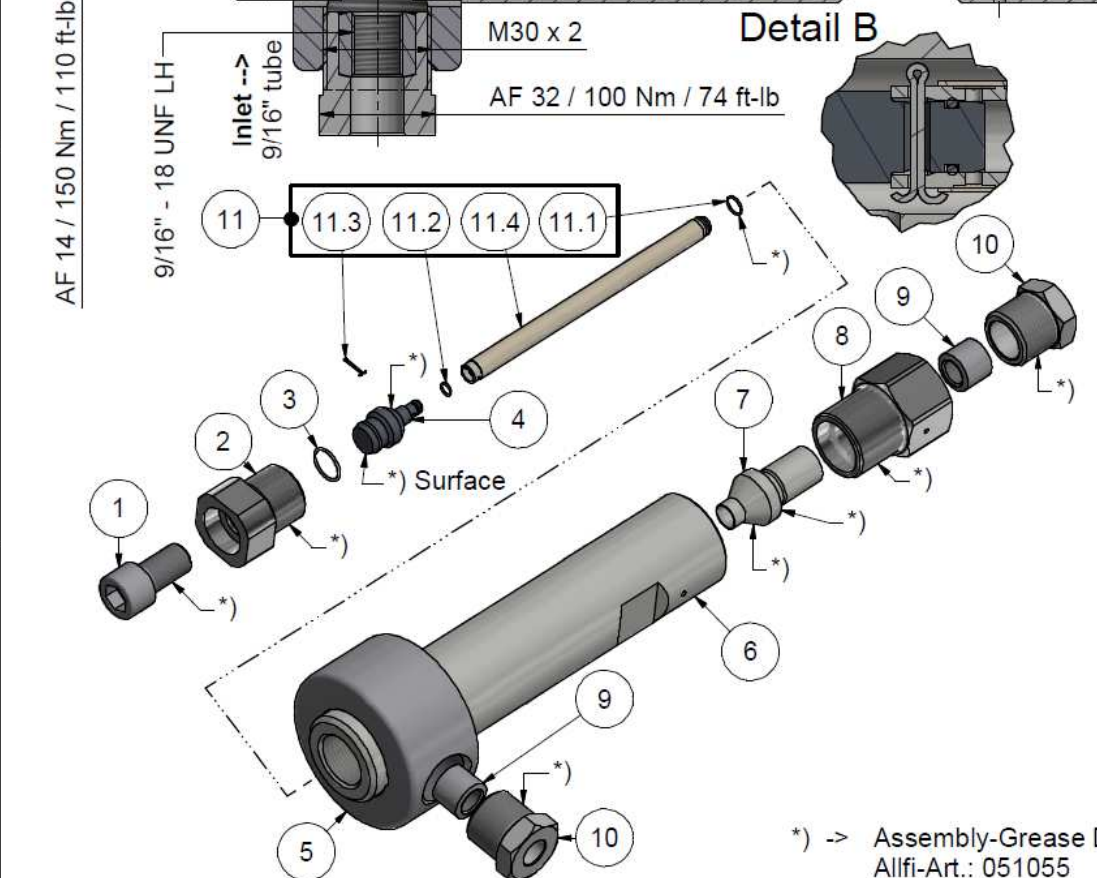
- Note flow direction.

- Clogged filters result in high pressure loss, for cleaning see installation and maintenance manual.

Filter-fineness	Filter complete	Filter-cartridge
Without	939100	-
10my	939110	939125
18my	939118	939126
35my	939135	939127
50my	939150	939128
70my	939170	939129



Detail B



Item	Qty	Description	Part-Number	Comments	Weight
1	1	Screw 9/16"	939108		91.7 g
2	1	Lock-screw 9/16"	939102		211.4 g
3	1	Snap ring 9/16"	939106		0.1 g
4	1	Filter holder 9/16"	939107	Wear part	45.8 g
5	1	Coupling ring 9/16"	939104		1388.7 g
6	1	Body 9/16"	939101	Wear part	3028.8 g
7	1	Pressure part 9/16"	939103	Wear part	24.9 g
8	1	Filter nut 9/16"	939111		353.7 g
9	2	Collar 9/16"	719100		28.9 g
10	2	Gland Nut 9/16"	709100		132.8 g
11	1	Filter cartridge 9/16"	Refer table	Wear part	57 g
11.1	1	O-Ring	010047	Included in Pos. 11	0 g
11.2	1	O-Ring	010138	Included in Pos. 11	0 g
11.3	1	Split Pin	040134	Included in Pos. 11	0 g

General tolerances ISO 2768-1 m. Designs and drawings created and produced by the contractor are the contractor's intellectual property and may only be used for the purposes of the order. Weight 5.53 kg

Amendment:
 A) Fettangaben ergänzt, 12.07.2017 AM
 B) Beschriftung neu definiert, 28.09.2017 AM
 C) 0152, New assembly Pos. 11, 22.09.2023 AM

HP Filter 90° 9/16" 2.0



ALLFI AG - RIEDENMATT 1 - CH-6370 STANS
 PHONE +41(0)41-618 05 05
 E-MAIL: sales@allfi.com <http://www.allfi.com>

Scale	2 : 3
Drawn	30.11.2017 AM
Checked	24.03.2017 BT
Release	24.03.2017 BT
Index-release	22.03.2024 PH

Max. 4150 bar / 60,000 psi

939100	Index	C	Sheet-No.	2
			No. of sheets	2

*) -> Assembly-Grease DX
 Allfi-Art.: 051055