

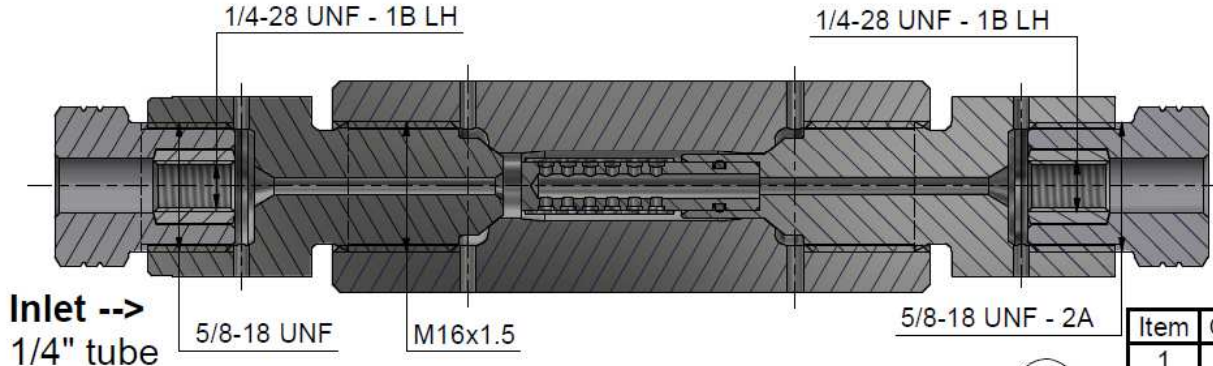
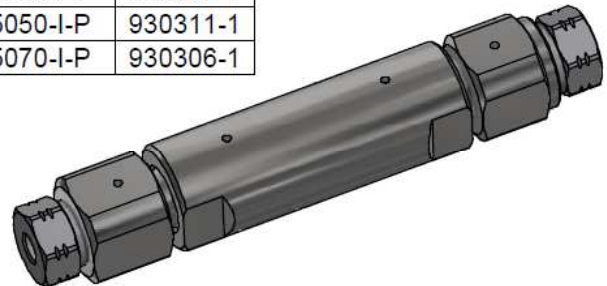
### Assembling - Maintenance

This drawing is appendix A of the installation and maintenance instruction "HP-filter straight 2.0 6200bar".

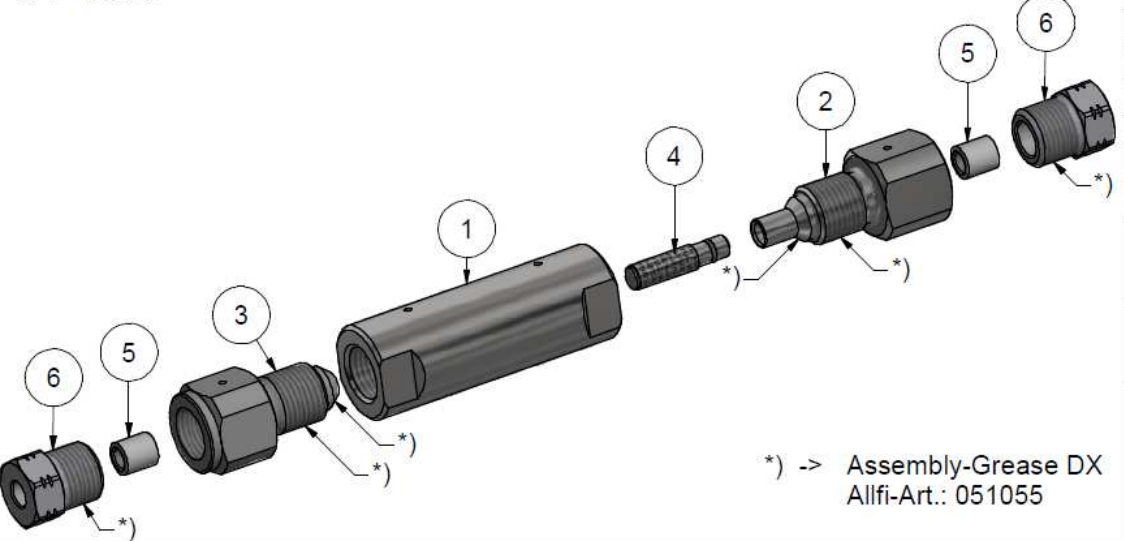
Complete installation and maintenance instruction refer to QR-Code or: <https://www.allfi.com/en/services/downloads/product-manuals/>

- Pressure relief holes must not be covered or closed
- Observe Flow direction
- Clogged filters may lead to increased pressure lost. For cleaning please refer to installation and maintenance instruction.

Filter-fineness	Filter complete	Filter-cartridge
Without	935000-I-P	-
07my	935007-I-P	930312-1
10my	935010-I-P	930309-1
18my	935018-I-P	930304-1
35my	935035-I-P	930307-1
50my	935050-I-P	930311-1
70my	935070-I-P	930306-1



Inlet --> 1/4" tube



\*) -> Assembly-Grease DX  
Allfi-Art.: 051055

Item	Qty	Description	Part-Number	Comments	Weight
1	1	Filter case 2.0	935054-P	Wear part	231.4 g
2	1	Filter Screw 2.0 Imp	935051-I-P	Wear part	84.1 g
3	1	Sealing Screw 2.0 Imp	935055-I-P	Wear part	80.8 g
4	1	Filter cartridge		Wear part	5 g
5	2	Collar 1/4"	711403		3.1 g
6	2	Gland Nut 1/4" Imp	701407-I-P		29.1 g

General tolerances ISO 2768-1 mK Designs and drawings created and produced by the contractor are the contractor's intellectual property and may only be used for the purposes of the order. Weight 0.47 kg

Amendment:	Replace for	-
A) Verschlusschraube neu, 14.03.2022 AM	Replaced by	-
B) 0093, SW22 was SW 7/8", 13.04.2022 AM	Drawn	26.11.2021 AM
HP-filter straight 2.0 Imp	Checked	12.04.2022 GB
	Release	12.04.2022 GB
	Index-release	13.04.2022 GB

Scale 3 : 2

Max 6200 bar / 90,000 psi

935000-I-P

Index B

Sheet-No. 2

No. of sheets 2

**allfi**  
Components

ALLFI AG - RIEDENMATT 1 - CH-6370 STANS  
PHONE +41(0)41-618 05 05  
E-MAIL: sales@allfi.com <http://www.allfi.com>