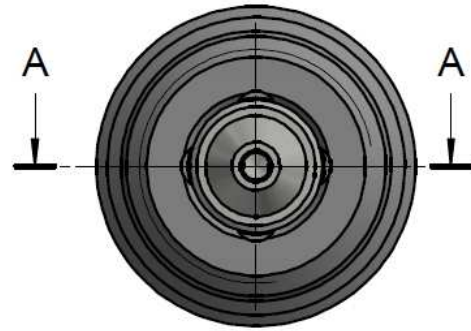


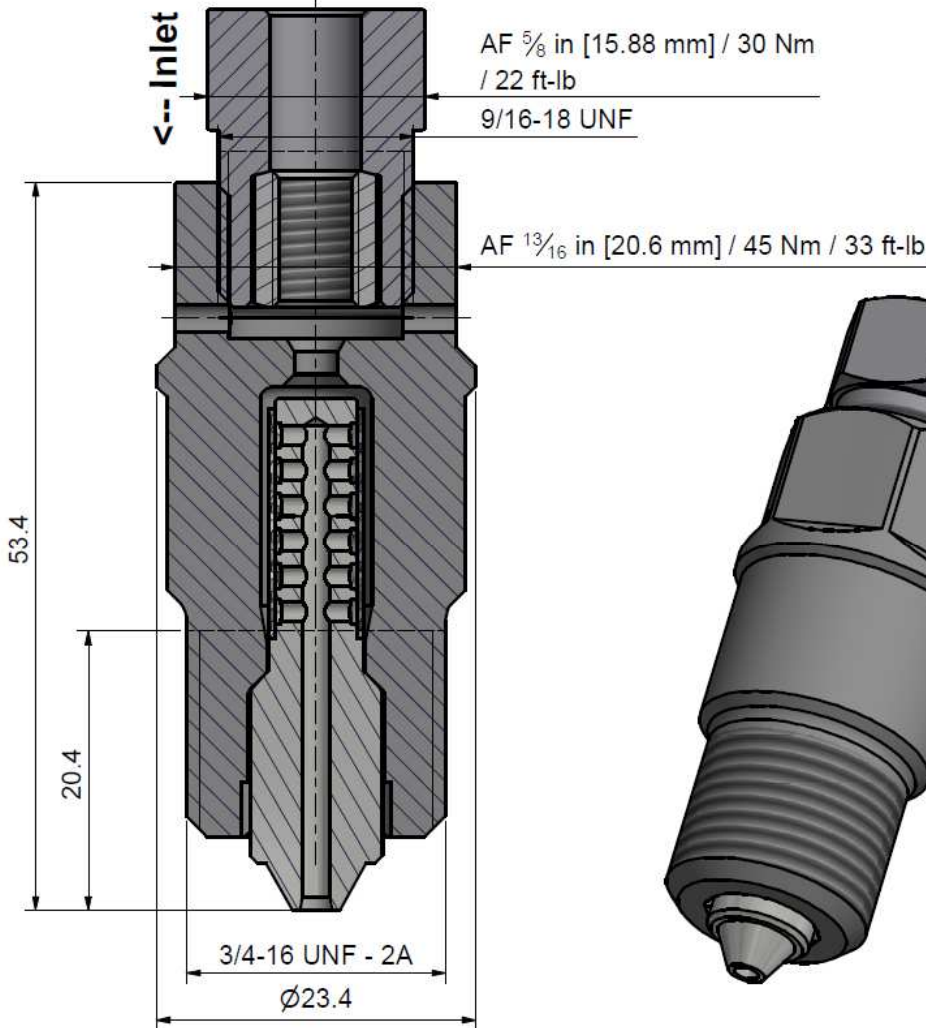
Assembling - Maintenance

This drawing is appendix A of the installation and maintenance manual "HP Filter Straight Mini 2.0".
 The complete installation and maintenance manual is hosted at:
<https://www.allfi.com/en/services/downloads/product-manuals/>

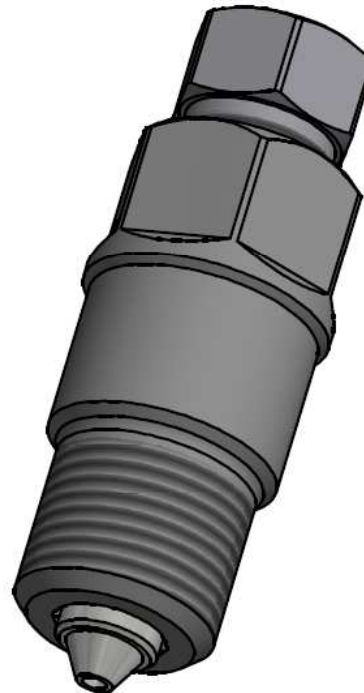
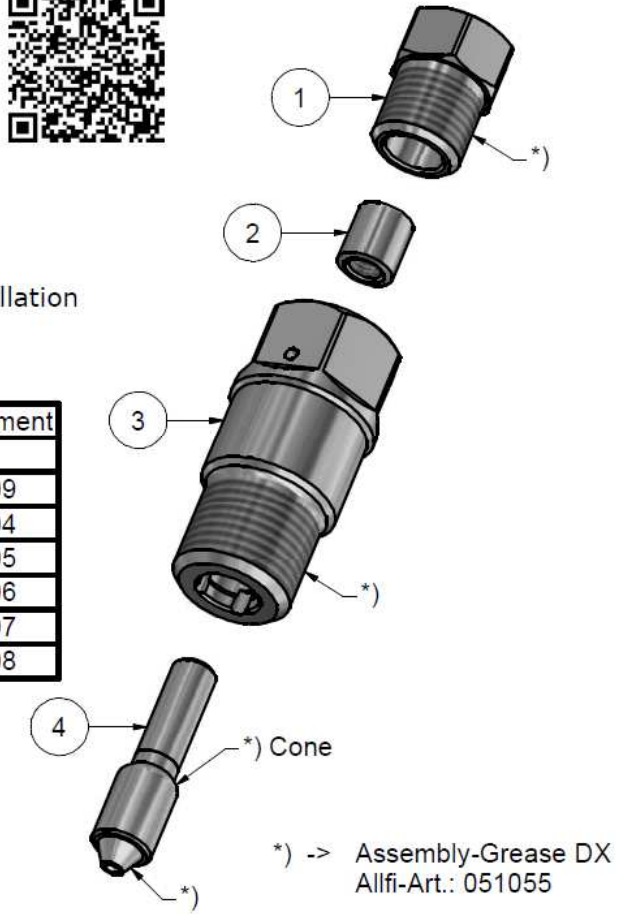
- Pressure relief holes may not be covered or closed.
- Note flow direction.
- Clogged filters result in high pressure loss, for cleaning see installation and maintenance manual.



A-A



Filtration-rating	Filter complete	Filter element
Without	931490-I	-
7my	931491-I	931409
10my	931492-I	931404
18my	931493-I	931405
35my	931494-I	931406
50my	931495-I	931407
70my	931496-I	931408



Item	Qty	Description	Part-Number	Comments	Weight
1	1	Gland Nut 1/4" Imp	701407		22.8 g
2	1	Collar 1/4"	711403		3.1 g
3	1	Body Filter Mini 2.0 Imp	931499-I	Wear part	100.1 g
4	1	Filter Cartridge Mini 2.0		Wear part	12.7 g

General tolerances ISO 2768-1 mK
Designs and drawings created and produced by the contractor are the contractor's intellectual property and may only be used for the purposes of the order.

Amendment:	Replace for	-
A) Drehmoment angepasst, 13.03.2023 AM	Replaced by	-
	Drawn	01.12.2022 GB

HP Filter Straight Mini 2.0 Imp	Scale	07.12.2022 AM
	2.5 : 1	31.01.2023 GB
		05.04.2023 BT

Max. 4150 bar / 60,000 psi

ATTN
 Components

ALLFI AG - RIEDENMATT 1 - CH-6370 STANS
 PHONE +41(0)41-618 05 05
 E-MAIL: sales@allfi.com

<http://www.allfi.com>

931490-I	Index	A
	Sheet-No.	2
	No. of sheets	2