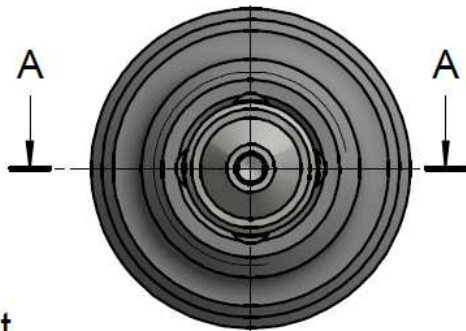


# Assembling - Maintenance

This drawing is appendix A of the installation and maintenance manual "HP Filter Straight Mini 2.0".  
 Complete installation and maintenance instruction refer to QR-Code or:  
<https://www.allfi.com/en/services/downloads/product-manuals/>

- Pressure relief holes may not be covered or closed.
- Note flow direction.
- Clogged filters result in high pressure loss, for cleaning see installation and maintenance manual.

Schnitt  
A-A



AF 5/8 in [15.88 mm] / 30 Nm / 22 ft-lb

9/16-18 UNF

← Inlet

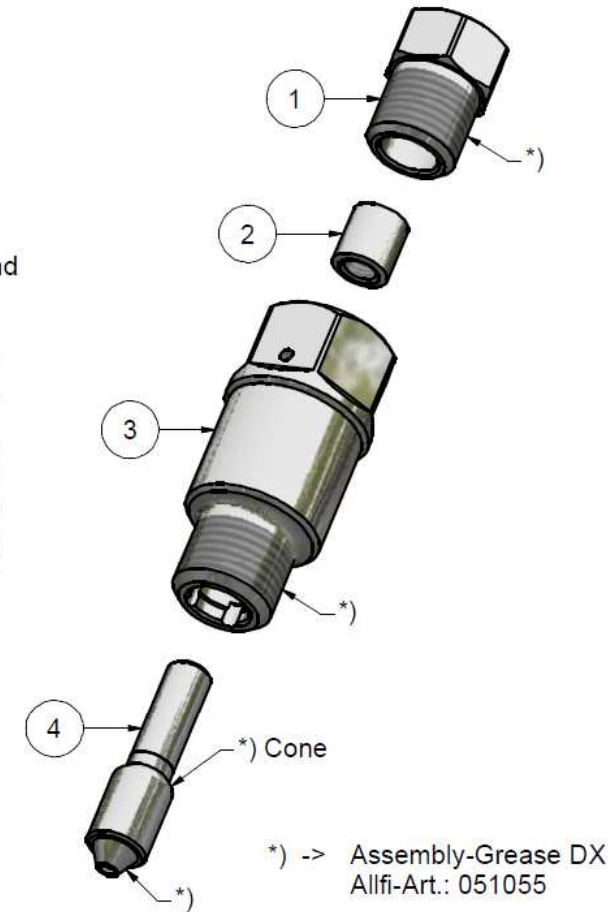
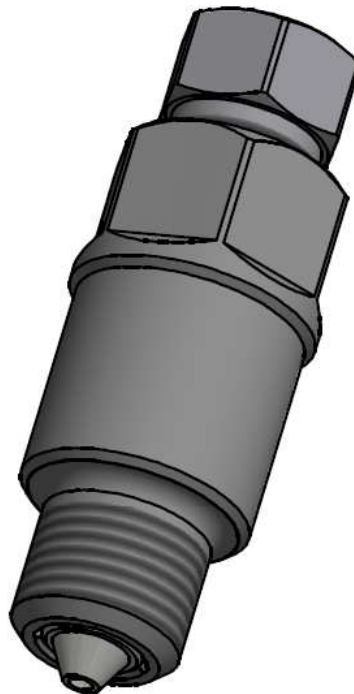
AF 13/16 in [20.6 mm] / 35 Nm / 26 ft-lb <sup>A)</sup>

53.4

M16 x 1.5

Ø21.8

Filtration-rating	Filter complete	Filter element
Without	931400-I	-
7my	931411-I	931409
10my	931410-I	931404
18my	931418-I	931405
35my	931435-I	931406
50my	931450-I	931407
70my	931470-I	931408



Item	Qty	Description	Part-Number	Comments	Weight
1	1	Gland Nut 1/4" Imp	701407		22.8 g
2	1	Collar 1/4"	711403		3.1 g
3	1	Body Filter Mini 2.0 Imp	931403-I	Wear part	97.5 g
4	1	Filter Cartridge Mini 2.0		Wear part	12.7 g

General tolerances ISO 2768-1 m Designs and drawings created and produced by the contractor are the contractor's intellectual property and may only be used for the purposes of the order.

Amendment:	Replace for	-
A) Drehmoment war 30 Nm, 09.07.2020	Replaced by	-
B) Filter 7my added, 11.01.2021 AM	Drawn	26.03.2020 AM

HP Filter Straight Mini 2.0 Imp	Scale	2.5 : 1
	Checked	27.03.2020 BT
	Release	03.06.2020 RB
	Index-release	18.01.2021 RB

**allfi** Components  
 ALLFI AG - RIEDENMATT 1 - CH-6370 STANS  
 PHONE +41(0)41-618 05 05 - TELEFAX +41(0)41-618 05 10  
 E-MAIL: sales@allfi.com http://www.allfi.com

Max. 4150 bar / 60,000 psi

931400-I	Index	B	Sheet- No.	2
	No. of sheets			2