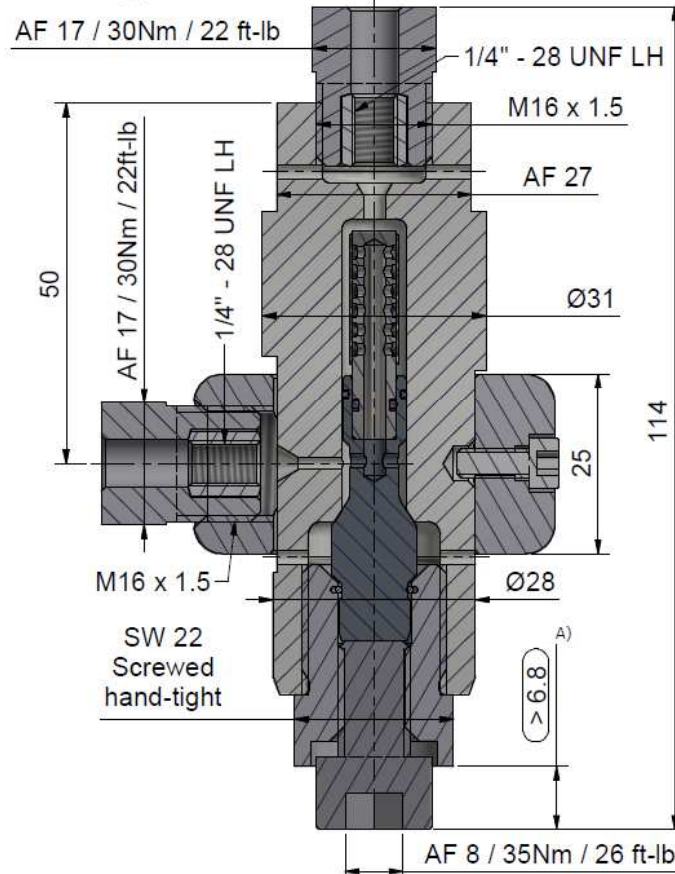
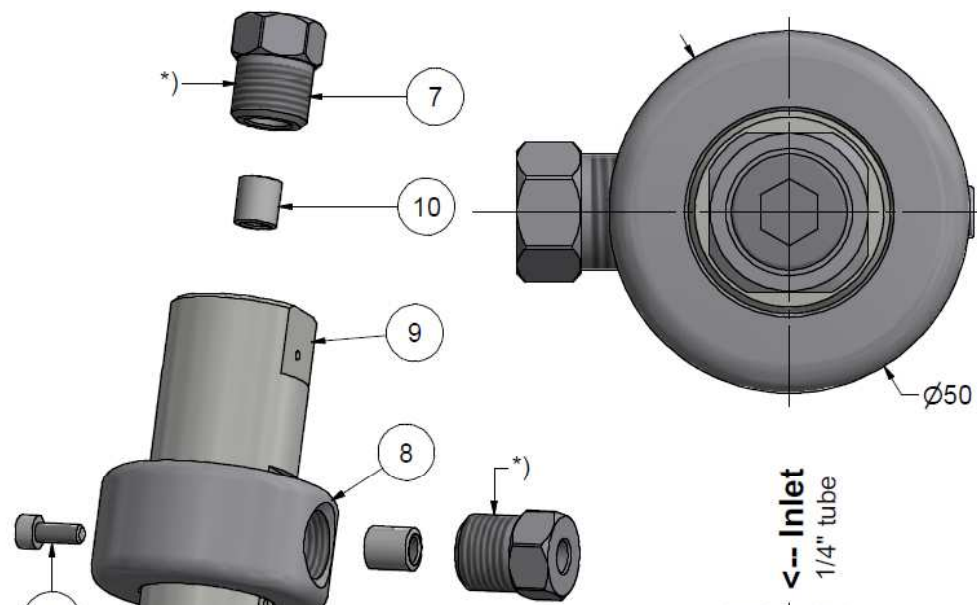
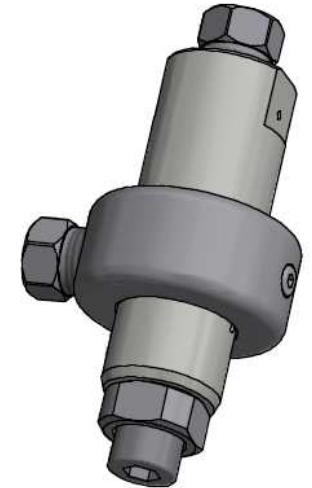


Assembling - Maintenance

This drawing is appendix A of the installation and maintenance manual "HD-Filter 90° 2.0".

The complete installation and maintenance manual is hosted at www.allfi.com
 - Pressure relief holes may not be covered or closed

Filtration-rating	Filter complete	Filter-element
Without	931300	-
07my	931307	930312-1
10my	931310	930309-1
18my	931318	930304-1
35my	931335	930307-1
50my	931350	930311-1
70my	931370	930306-1



* -> Assembly-Grease DX
 ALLFI-Art.: 051055

Item	Qty	Description	Part-Number	Comments	Weight
1	1	Screw	931355		23.3 g
2	1	Lock-screw	931354		54.9 g
3	1	Snap ring	931356		0 g
4	1	Filter holder	931353		17.8 g
5	1	O-Ring	010065		0 g
6	1	Filter cartridge		Wear part	5 g
7	2	Gland Nut 1/4"	701403		29.1 g
8	1	Coupling ring	931051		234.9 g
9	1	Body	931352	Wear part	351.6 g
10	2	Collar 1/4"	711403		3.1 g
11	1	Hex Socket Screw M4 x 10	000122		0.3 g

General tolerances ISO 2768-1 m Designs and drawings created and produced by the contractor are the contractor's intellectual property and may only be used for the purposes of the order. Weight 0.75 kg

Amendment:	Replace for	-
A) Kontrollmass war >5.8mm, 15.02.2016 AM	Replaced by	-
C) Beschriftung angepasst, 23.08.2017 AM	Drawn	02.11.2015 AM
D) Pos. 11 neu, 18.10.2024 AM	Checked	25.01.2016 BT
	Release	25.01.2016 BT
	Index-release	18.10.2024 AM

HP Filter 90° 2.0

Scale 4 : 3

Max. 4150 bar / 60,000 psi
 Metallic sealing

931300

ALLFI AG - RIEDENMATT 1 - CH-6370 STANS
 PHONE +41(0)41-618 05 05
 E-MAIL: sales@allfi.com <http://www.allfi.com>

Index	Sheet-No.	2
D	No. of sheets	2