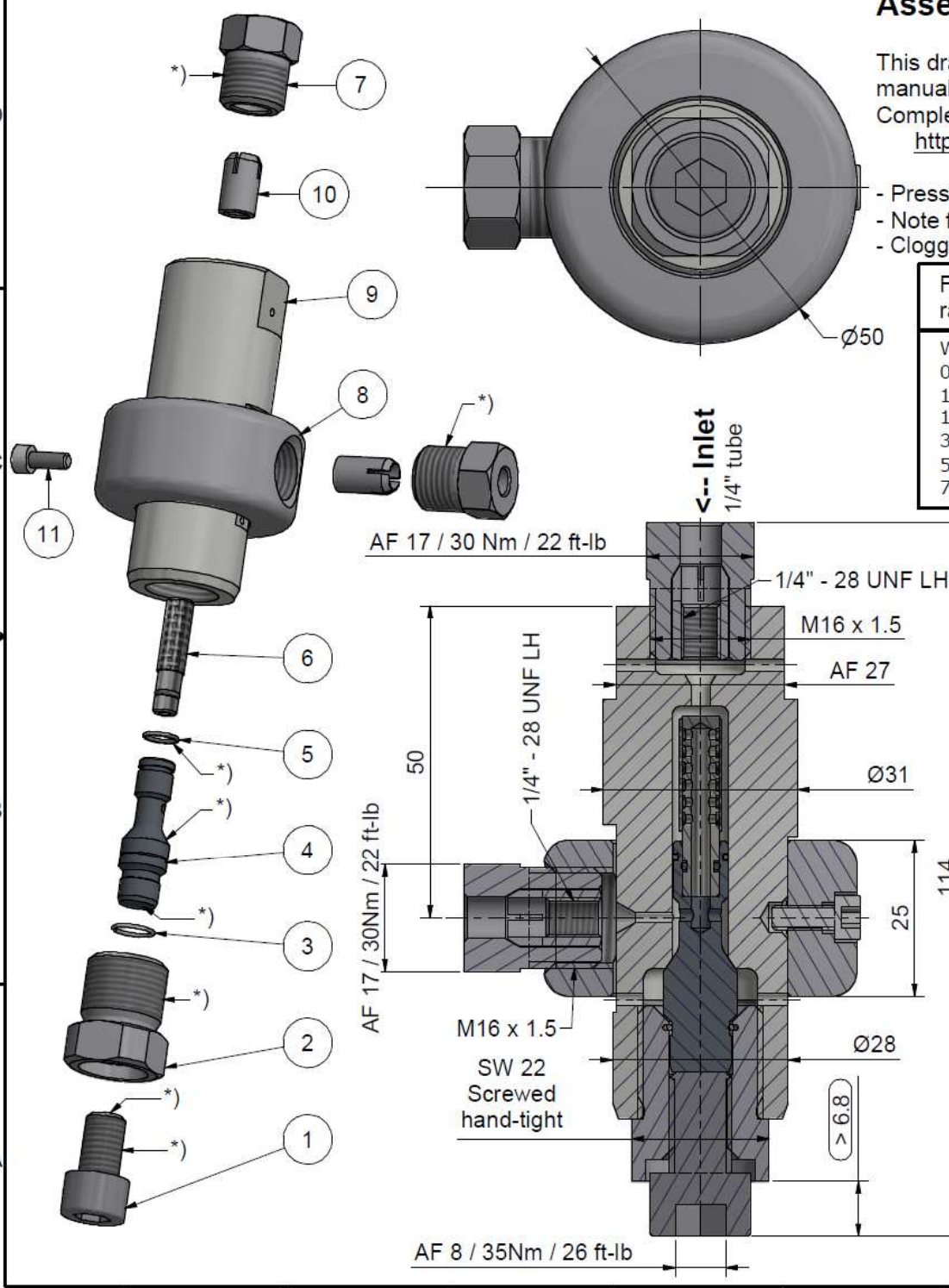
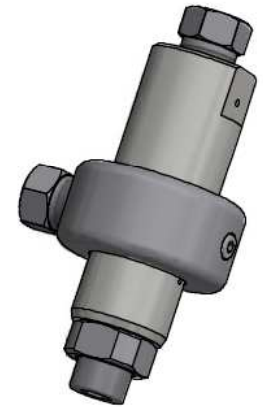


Assembling - Maintenance

This drawing is appendix A of the installation and maintenance manual "HP-Filter 90° 2.0".
 Complete installation and maintenance instruction refer to QR-Code or:
<https://www.allfi.com/en/services/downloads/product-manuals/>

- Pressure relief holes may not be covered or closed.
- Note flow direction.
- Clogged filters result in high pressure loss, for cleaning see installation and maintenance manual.

Filtration-rating	Filter complete	Filter-element
Without	931300-V	-
07my	931307-V	930312-1
10my	931310-V	930309-1
18my	931318-V	930304-1
35my	931335-V	930307-1
50my	931350-V	930311-1
70my	931370-V	930306-1



*) -> Assembly-Grease DX
 Allfi-Art.: 051055

Item	Qty	Description	Part-Number	Comments	Weight
1	1	Screw	931355		23.3 g
2	1	Lock-screw	931354		54.9 g
3	1	Snap ring	931356		0 g
4	1	Filter holder	931353		17.8 g
5	1	O-Ring	010065		0 g
6	1	Filter cartridge		Wear part	5 g
7	2	Gland Nut 1/4" VIBRO	701402		28.1 g
8	1	Coupling ring	931051		234.9 g
9	1	Body	931352	Wear part	351.6 g
10	2	Collar 1/4" VIBRO	711402		3.9 g
11	1	Hex Socket Screw M4 x 10	000122		0.3 g

General tolerances ISO 2768-1 mK Designs and drawings created and produced by the contractor are the contractor's intellectual property and may only be used for the purposes of the order. Weight 0.75 kg

Amendment: A) Pos. 11 neu, 23.10.2024 AM	Replace for -
	Replaced by -
	Drawn 27.10.2021 AM
HP Filter 90° 2.0 Vibro	Checked 02.11.2021 RB
	Release 02.11.2021 RB
	Index-release 23.10.2024 AM

allfi Components
 ALLFI AG - RIEDENMATT 1 - CH-6370 STANS
 PHONE +41(0)41-618 05 05
 E-MAIL: sales@allfi.com <http://www.allfi.com>

Scale 4 : 3

Max. 4150 bar / 60,000 psi
 Metallic sealing

931300-V	Index	A
	Sheet-No.	2
	No. of sheets	2