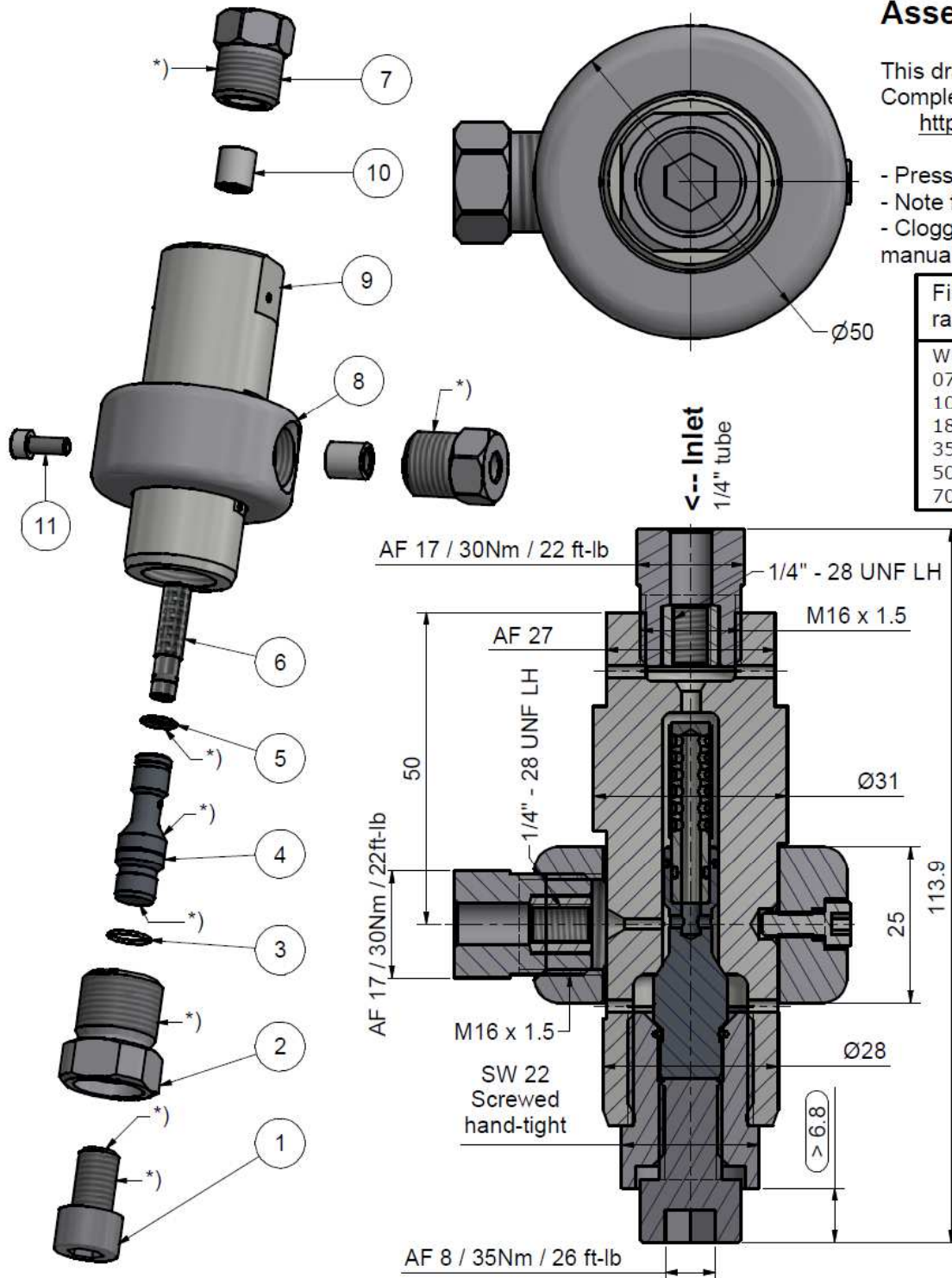
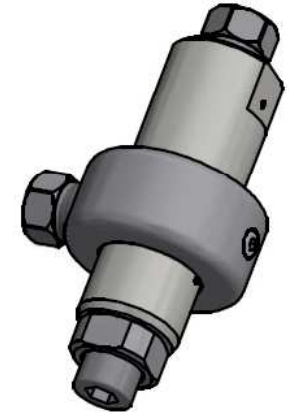


Assembling - Maintenance

This drawing is appendix A of the installation and maintenance instruction "HP-Filter 90° 2.0". Complete installation and maintenance instruction refer to QR-Code or:
<https://www.allfi.com/en/services/downloads/product-manuals/>

- Pressure relief holes may not be covered or closed.
- Note flow direction.
- Clogged filters result in high pressure loss, for cleaning see installation and maintenance manual.

Filtration-rating	Filter complete	Filter-element
Without	931300-F	-
07my	931307-F	930312-1-V
10my	931310-F	930309-1-V
18my	931318-F	930304-1-V
35my	931335-F	930307-1-V
50my	931350-F	930311-1-V
70my	931370-F	930306-1-V



*) -> Assembly-Grease DX
Allfi-Art.: 051055

Item	Qty	Description	Part-Number	Comments	Weight
1	1	Screw	931355		23.3 g
2	1	Lock-screw	931354		54.9 g
3	1	Snap ring	931356		0 g
4	1	Filter holder	931353		17.8 g
5	1	O-Ring	010104		0 g
6	1	Filter cartridge		Wear part	5 g
7	2	Gland Nut 1/4"	701403		29.1 g
8	1	Coupling ring	931051		234.9 g
9	1	Body	931352	Wear part	351.6 g
10	2	Collar 1/4"	711403		3.1 g
11	1	Hex Socket Screw M4 x 10	000122		0.3 g

General tolerances ISO 2768-1 mK Designs and drawings created and produced by the contractor are the contractor's intellectual property and may only be used for the purposes of the order. Weight 0.75 kg

Amendment: A) Pos. 11 neu, 21.10.2024 AM	Replace for -
	Replaced by -
Drawn 19.09.2017 AM	Checked 26.09.2017 RB
	Release 26.09.2017 RB
	Index-release 21.10.2024 AM

HP-Filter 90° 2.0 FKM O-rings Scale 4 : 3 Max. 4150 bar / 60,000 psi Metallic sealing	
ALLFI Components ALLFI AG - RIEDENMATT 1 - CH-6370 STANS PHONE +41(0)41-618 05 05 E-MAIL: sales@allfi.com	http://www.allfi.com Index Sheet-No. 2 No. of sheets 2 931300-F