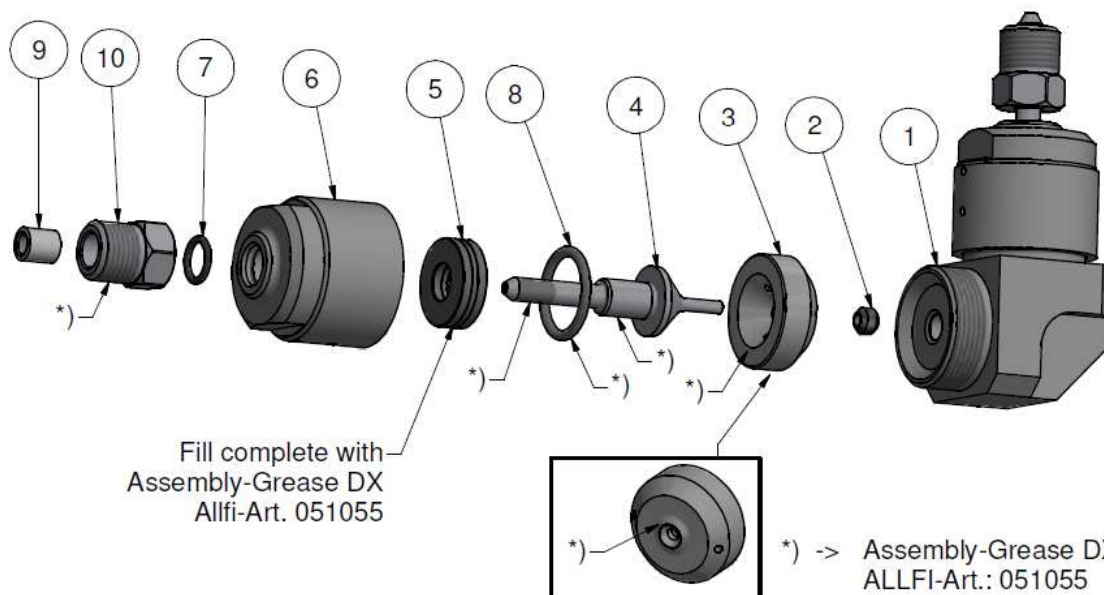
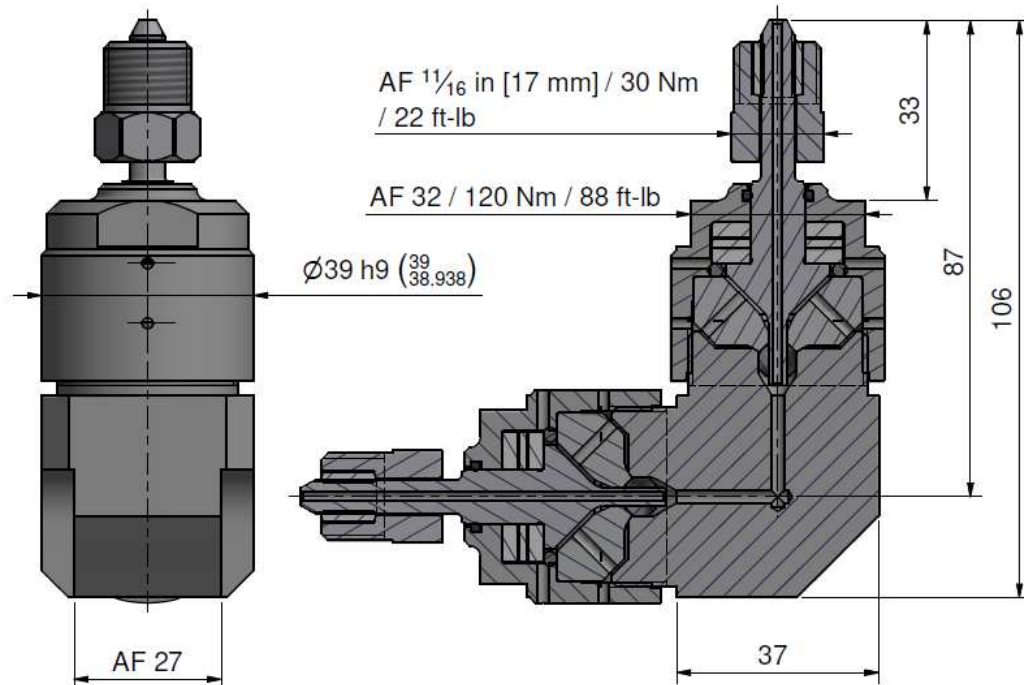


Schnitt A-A (1 : 1)



Assembling - Maintenance

This drawing is appendix A of the installation and maintenance manual "Swivel Joint 90° and Parallel 1/4" 2.0 short. Complete installation and maintenance instruction refer to QR-Code or:

<https://www.allfi.com/en/services/downloads/product-manuals/>

- Pressure relief holes may not be covered or closed.
- Make sure that the HP Tubes are connected stress-free, i.e. do not exert any forces on the shaft.



Item	Qty	Description	Part-Number	Comments	Weight
1	1	Cover Swivel Joint 2.0 double	921701	Wear part	59.8 g
2	2	HP-Seal 2.0	912052	Wear part	1 g
3	2	Pressure Plate 2.0	921002-P	Wear part	58.4 g
4	2	Shaft for Swivel joint	921313	Wear part	27.2 g
5	2	Needle bearing	022016	Wear part	2.7 g
6	2	Casing for Swivel joint	921314		140.9 g
7	2	O-Ring D=9.52 x 1.78	010050	Wear part	0.1 g
8	2	O-Ring D=20.63 x 2.62	010145	Wear part	0.4 g
9	2	Collar 1/4"	711403		3.1 g
10	2	Gland Nut 1/4"	701403		29.1 g

General tolerances ISO 2768-1 mK Designs and drawings created and produced by the contractor are the contractor's intellectual property and may only be used for the purposes of the order.

Amendment:	Replace for -
	Replaced by -
Drawn	05.02.2025 PH
Checked	05.02.2025 PH
Release	05.02.2025 PH
Index-release	

Double Swivel Joint 1/4" 2.0

Scale
1 : 1

Max. 4150 bar / 60,000 psi



ALLFI AG - RIEDENMATT 1 - CH-6370 STANS
PHONE +41(0)41-618 05 05
E-MAIL: sales@allfi.com

<http://www.allfi.com>

921700

Index	Sheet- No.	2
-	No. of sheets	1