

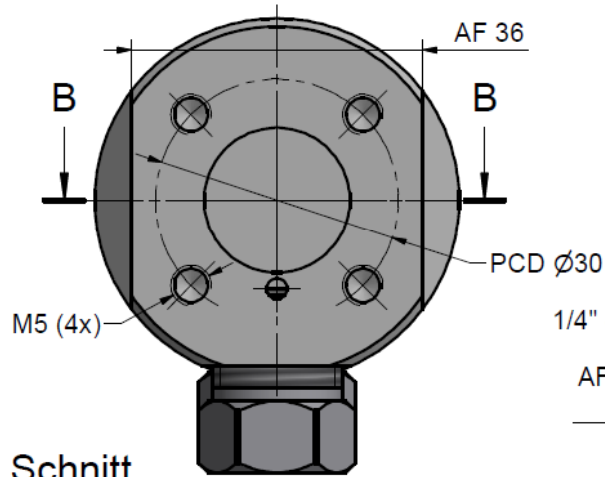
# Assembling - Maintenance

This drawing is appendix A of the installation and maintenance manual "Swivel Joint 90° f/f 1/4" 2.0 Imp".

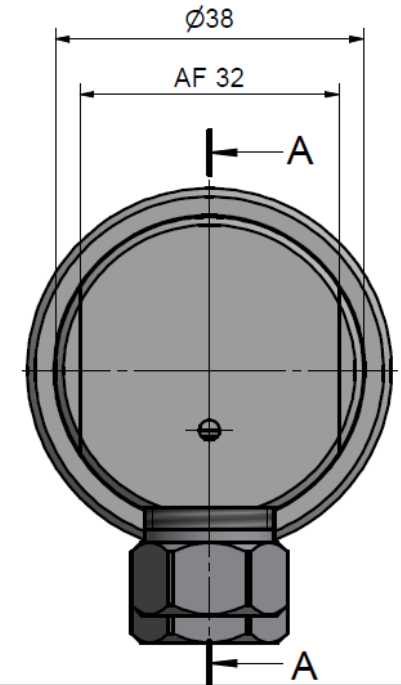
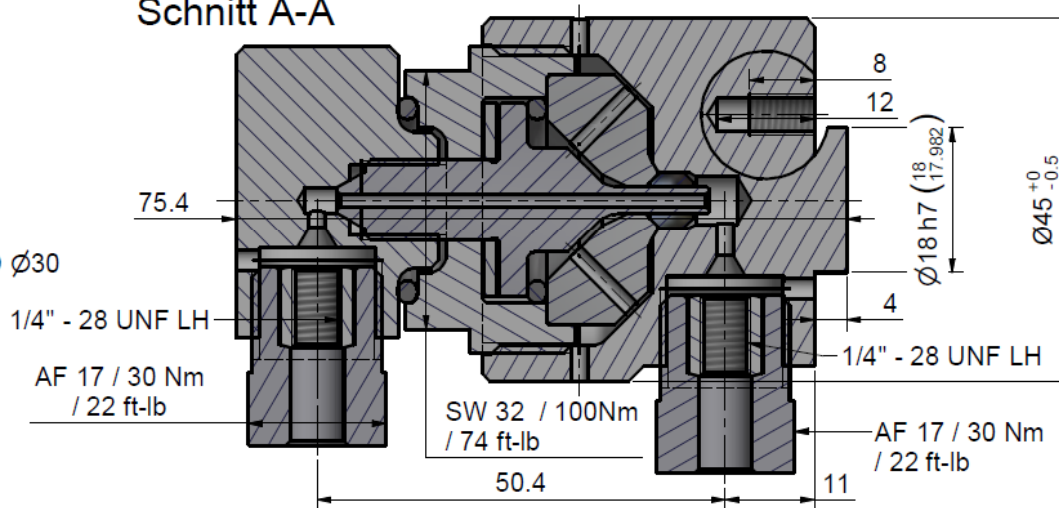
Complete installation and maintenance instruction refer to QR-Code or:

<https://www.allfi.com/en/services/downloads/product-manuals/>

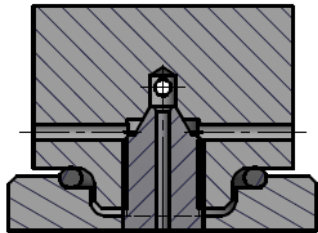
- Pressure relief holes may not be covered or closed.
- Position 2, 4, 5 & 7 not repairable by user
- Make sure that the HP Tubes are connected stress-free, i.e. do not exert any forces on the shaft.



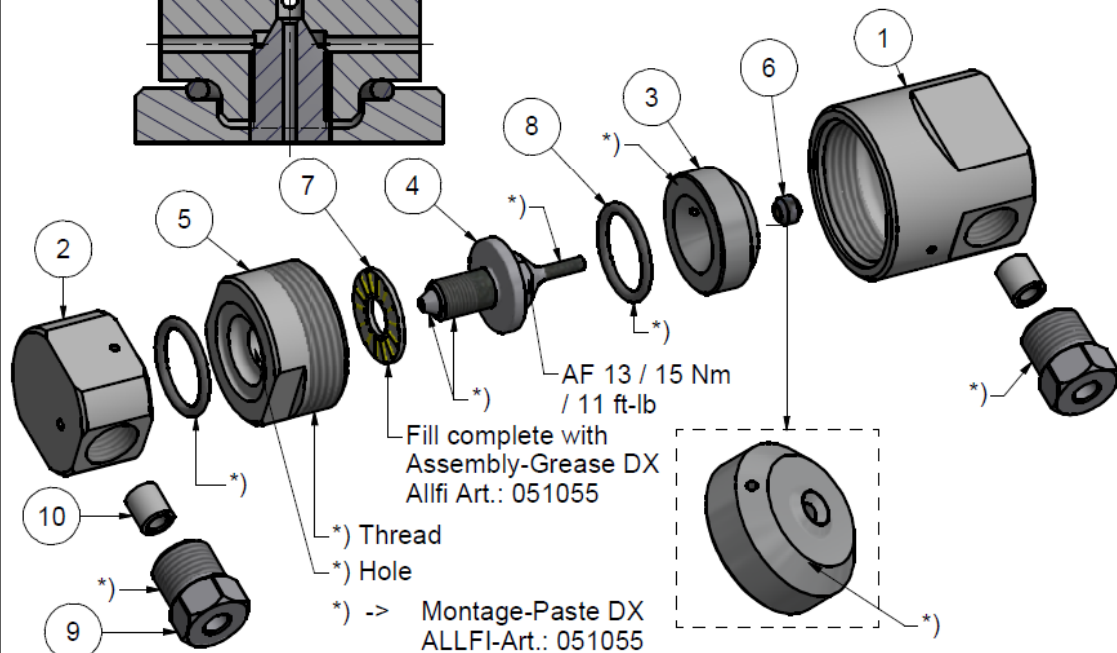
Schnitt A-A



Schnitt B-B



2x Tube 1/4"



Item	Qty	Description	Part-Number	Comments	Weight
1	1	Cover 90° 2.0	921501		307.9 g
2	1	Elbow Swivel Joint 2.0	921502		148.4 g
3	1	Pressure Plate 2.0	921002-P	Wear part	58.4 g
4	1	Shaft for Swivel Joint 2.0	921504	Wear part	30.8 g
5	1	Bearing Housing 2.0	921505		111.7 g
6	1	HP-Seal 2.0	912052	Wear part	1 g
7	1	Bearing for Swivel Joint	022019	Wear part	0.8 g
8	2	O-Ring D=20.63 x 2.62	010145		0.4 g
9	2	Gland Nut 1/4"	701403		29.1 g
10	2	Collar 1/4"	711403		3.1 g

General tolerances ISO 2768-1 mK Designs and drawings created and produced by the contractor are the contractor's intellectual property and may only be used for the purposes of the order. Weight 0.72 kg

Amendment: A) Änderung in Unterbaugruppe SW36mm neu, 05.03.2020 AM	Replace for: -
	Replaced by: -
Drawn: 12.07.2019 AM	Checked: 15.10.2019 BT
	Release: 23.04.2020 RB
	Index-release: 23.04.2020 RB

**Swivel Joint Parallel 2.0**

Scale 3 : 2

Max. 4150 bar / 60,000 psi

**921500**

ALLFI AG - RIEDENMATT 1 - CH-6370 STANS  
PHONE +41(0)41-618 05 05  
E-MAIL: sales@allfi.com http://www.allfi.com

Index: A	Sheet-No.: 2
	No. of sheets: 2