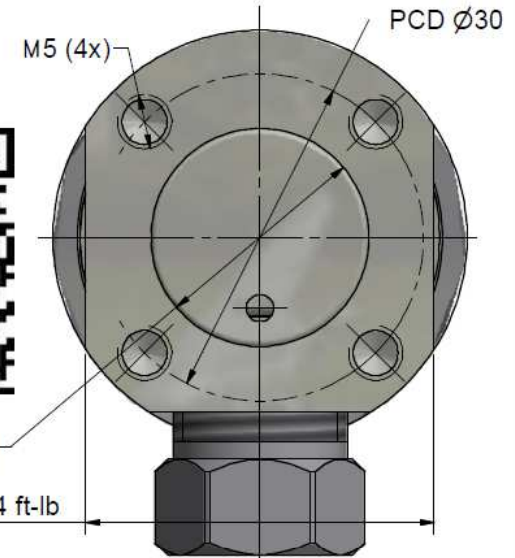
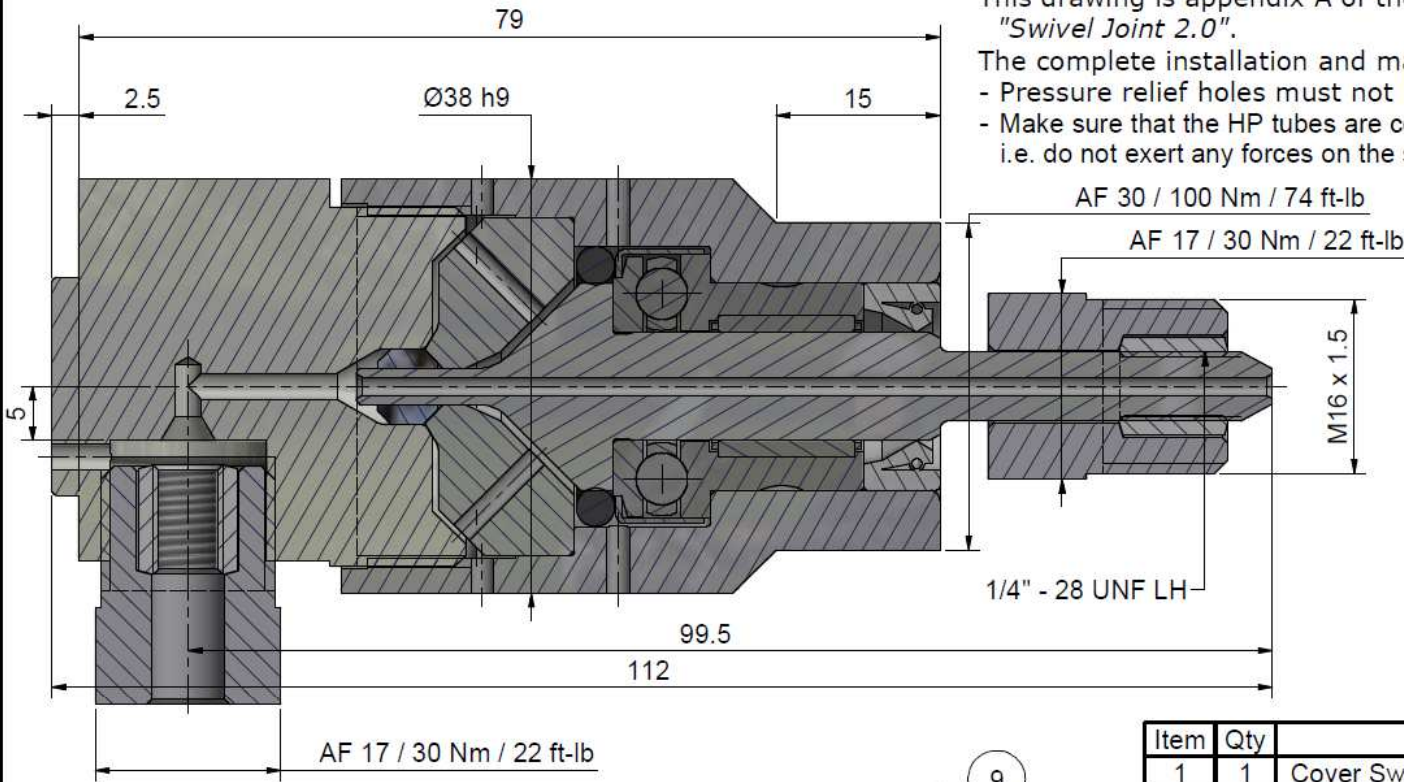


### Assembling - Maintenance

This drawing is appendix A of the installation and maintenance instruction "Swivel Joint 2.0".

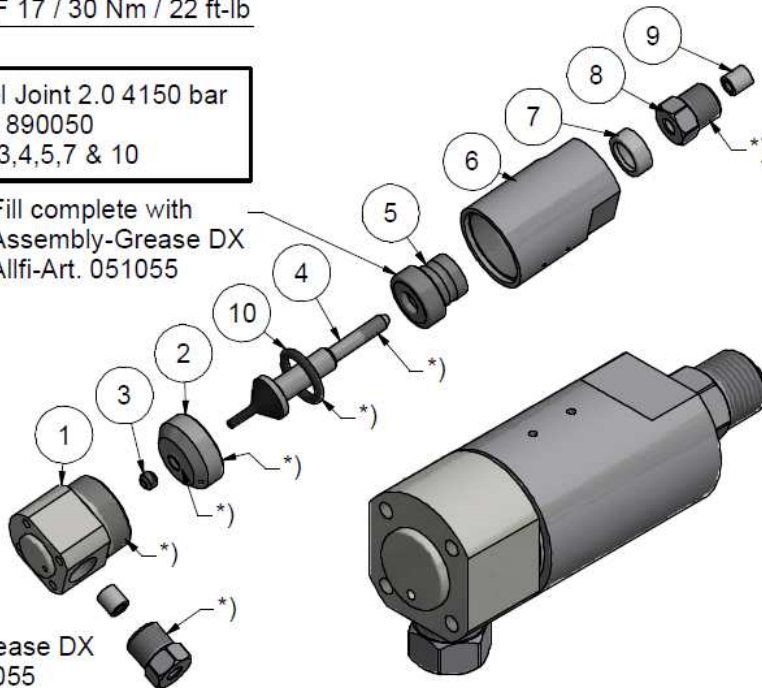
The complete installation and maintenance instruction is hosted at: [www.allfi.com](http://www.allfi.com)

- Pressure relief holes must not be covered or closed
- Make sure that the HP tubes are connected stress-free, i.e. do not exert any forces on the shaft.



Spare Part-Set Swivel Joint 2.0 4150 bar  
Article-Nr. 890050  
Consists of 2,3,4,5,7 & 10

Fill complete with  
Assembly-Grease DX  
Allfi-Art. 051055



\*) -> Assembly-Grease DX  
Allfi-Art.: 051055

Item	Qty	Description	Part-Number	Comments	Weight
1	1	Cover Swivel Joint 90° Angle 2.0	921101	Wear part	235.4 g
2	1	Pressure Plate 2.0	921002-P	Wear part	58.4 g
3	1	HP-Seal 2.0	912052	Wear part	1 g
4	1	Shaft for Swivel Joint 2.0 4150 bar	921212	Wear part	38.3 g
5	1	Bearing for Swivel Joint	022002	Wear part	5.1 g
6	1	Case to Swivel joint	921207		243.9 g
7	1	Rotary Shaft Seal	023002	Wear part	1 g
8	2	Gland Nut 1/4"	701403		29.1 g
9	2	Collar 1/4"	711403		3.1 g
10	1	O-Ring D=18.64 x 3.53	010151	Wear part	0.6 g

General tolerances ISO 2768-1 m Designs and drawings created and produced by the contractor are the contractor's intellectual property and may only be used for the purposes of the order. Weight 0.65 kg

Amendment: A) ALLFI-Logo neu, 20.08.2020 AM B) 0066, Pos. 10 added, 17.02.2021 AM	Replace for 920000 Replaced by - Drawn 18.10.2018 AM Checked 05.11.2018 RB Release 08.11.2018 RB Index-release 05.05.2021 BT
<b>Swivel Joint 90° Angle 1/4" 2.0</b>	Scale 2 : 1

**allfi** Components  
ALLFI AG - RIEDENMATT 1 - CH-6370 STANS  
PHONE +41(0)41-618 05 05  
E-MAIL: [sales@allfi.com](mailto:sales@allfi.com) <http://www.allfi.com>

Max. 4150 bar / 60,000 psi

921100

Index	Sheet- No.	2
B	No. of sheets	2