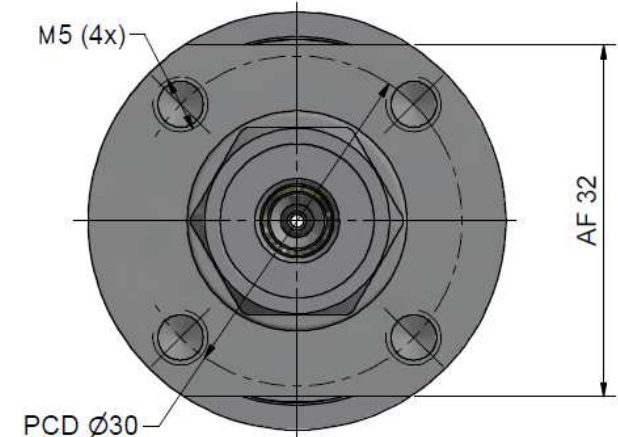
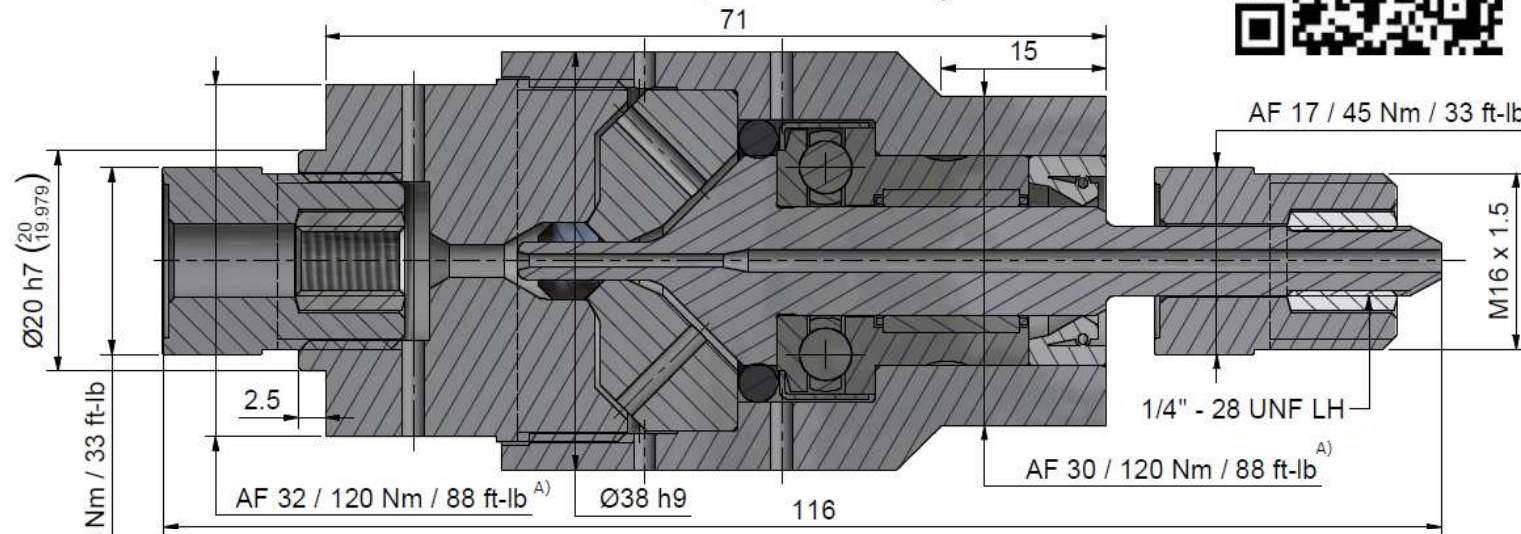


# Assembling - Maintenance

This drawing is appendix A of the installation and maintenance manual "Swivel Joint 2.0".  
Complete installation and maintenance instruction refer to QR-Code or:

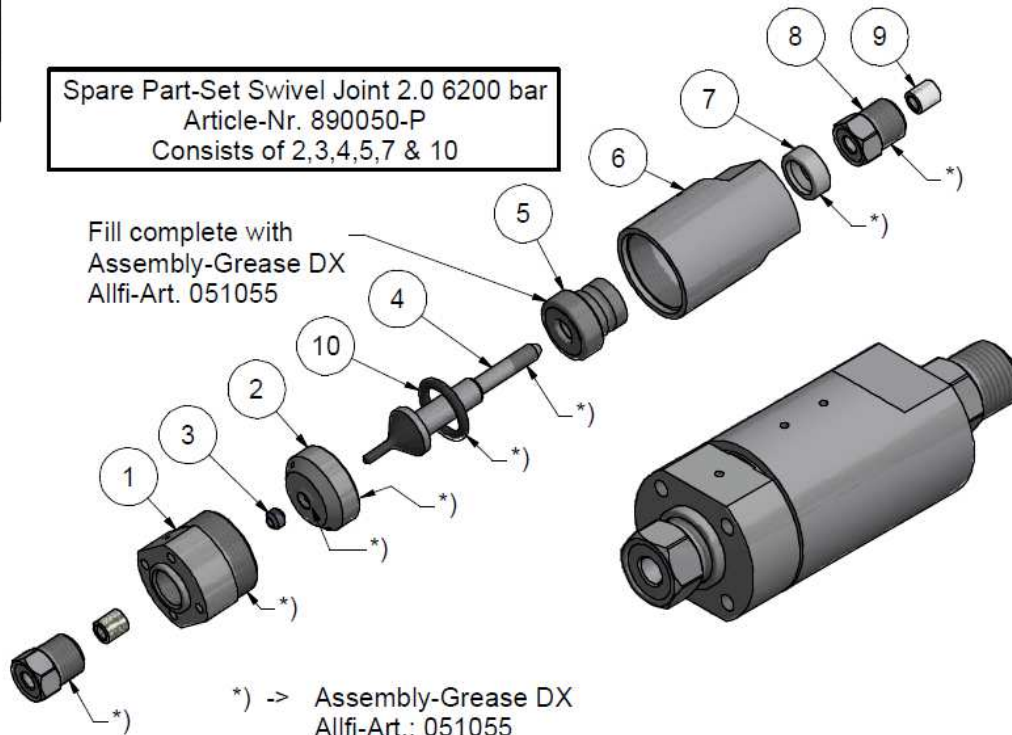
<https://www.allfi.com/en/services/downloads/product-manuals/>

- Pressure relief holes may not be covered or closed.
- Make sure that the HP Tubes are connected stress-free, i.e. do not exert any forces on the shaft.



Spare Part-Set Swivel Joint 2.0 6200 bar  
Article-Nr. 890050-P  
Consists of 2,3,4,5,7 & 10

Fill complete with  
Assembly-Grease DX  
Allfi-Art. 051055



\*) -> Assembly-Grease DX  
Allfi-Art.: 051055

Item	Qty	Description	Part-Number	Comments	Weight
1	1	Cover Swivel Joint straight 2.0	921001-P	Wear part	174.8 g
2	1	Pressure Plate 2.0	921002-P	Wear part	58.4 g
3	1	HP-Seal 2.0	912052	Wear part	1 g
4	1	Shaft for Swivel Joint 2.0 6200 bar	921208	Wear part	38.1 g
5	1	Needle Bearing	022002	Wear part	5.1 g
6	1	Case to Swivel joint	921207		244 g
7	1	Rotary Shaft Seal	023002	Wear part	1 g
8	2	Gland Nut 1/4" 90.000psi	701403-P		27.9 g
9	2	Collar 1/4"	711403		3.1 g
10	1	O-Ring D=18.64 x 3.53	010151	Wear part	0.6 g

General tolerances ISO 2768-1 mK Designs and drawings created and produced by the contractor are the contractor's intellectual property and may only be used for the purposes of the order. Weight 0,59 kg

Amendment:	D) 0066, Pos. 10 added, 18.02.2021 AM	Replace for	920200-P
A) Drehmoment von 100Nm auf 120Nm erhöht, 03.07.2017 AM		Replaced by	-
B) Beschriftung neu definiert, 28.09.2017 AM		Drawn	03.05.2017 RB
C) ALLFI-Logo neu, 20.08.2020 AM		Checked	22.06.2017 BT
<b>Swivel Joint Straight 1/4" 2.0</b>		Scale	2 : 1
		Release	06.09.2017 RB
		Index-release	10.03.2021 RB

**allfi**  
Components

ALLFI AG - RIEDENMATT 1 - CH-6370 STANS  
PHONE +41(0)41-618 05 05 - TELEFAX +41(0)41-618 05 10  
E-MAIL: sales@allfi.com http://www.allfi.com

Max. 6200 bar / 90,000 psi

921000-P	Index	D	Sheet- No.	2
	No. of sheets			2