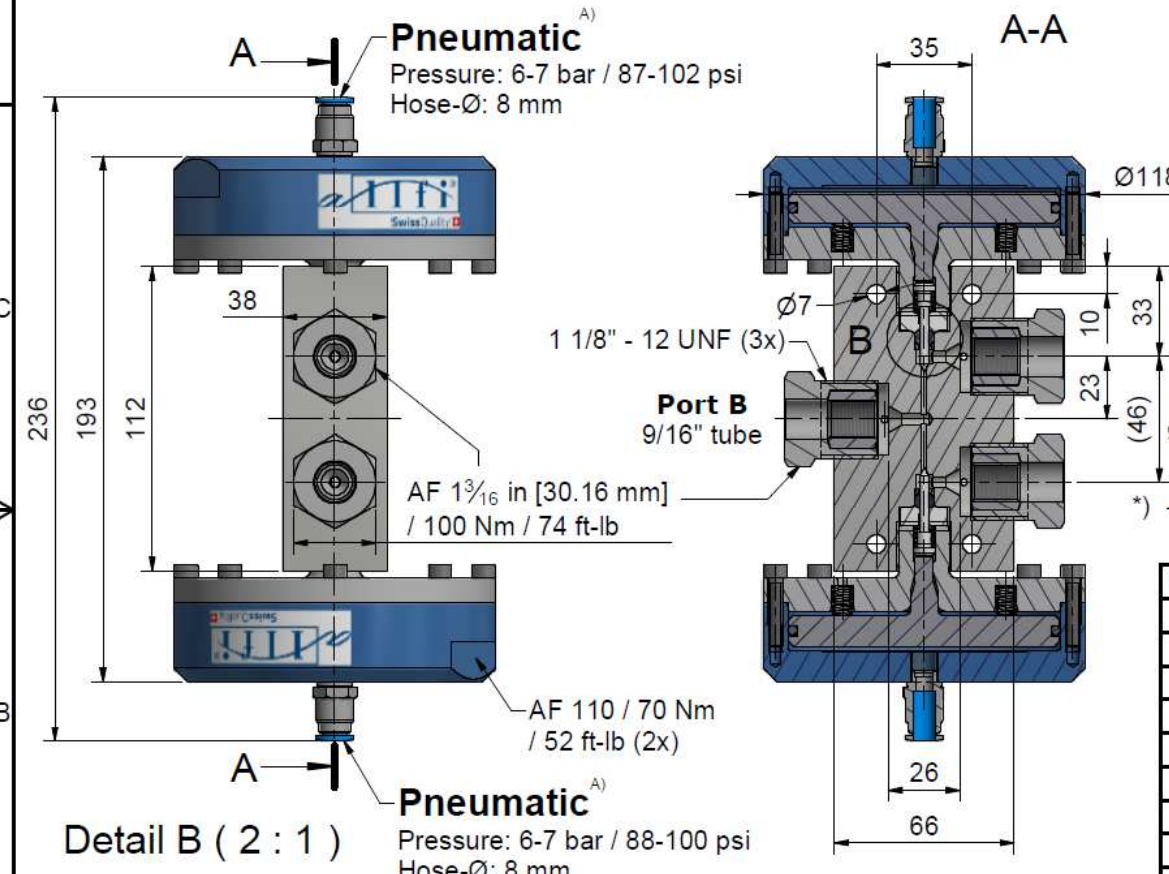
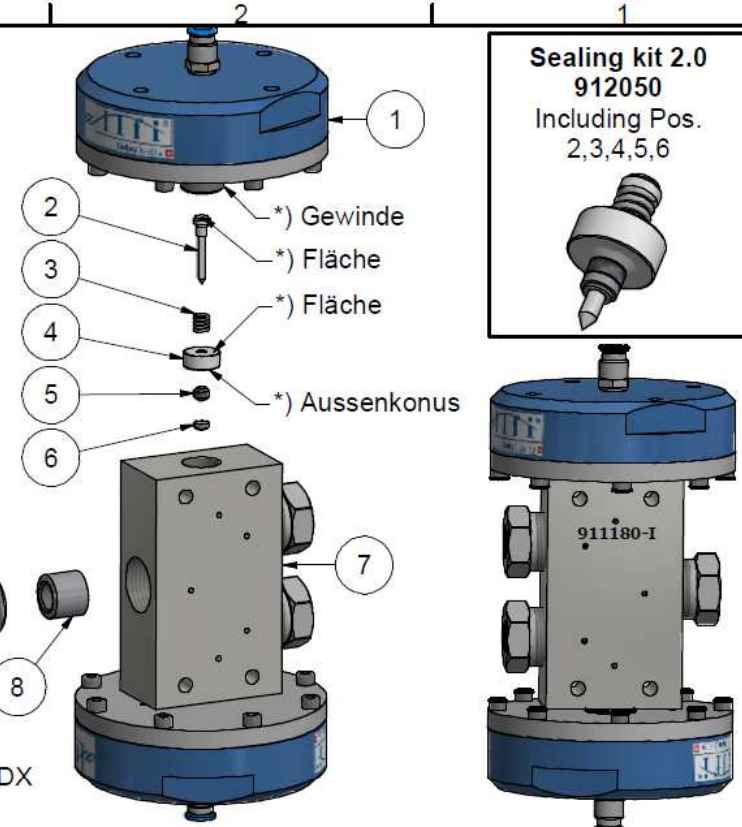


# Assembling - Maintenance

This drawing is appendix A of the installation and maintenance instruction "Pneumatic Valve 2.0". Complete installation and maintenance instruction refer to QR-Code or: <https://www.allfi.com/en/services/downloads/product-manuals/>

- Pressure relief holes must not be covered or closed.
- Pneumatic cylinder must not be pressurized during assembly & disassembly.



\*) -> Assembly-Grease DX  
Allfi-Art.: 051055

Item	Qty	Description	Part-Number	Comments	Weight
1	2	Pneumatic Cylinder 2.0 NO	912290		2120.3 g
2	2	Needle complete 2.0	912076	Wear part	2.2 g
3	2	Spring	021033		0.1 g
4	2	Pressure plate 2.0	912053	Wear part	11.8 g
5	2	HP-Seal 2.0	912052	Wear part	1 g
6	2	Conical disc 2.0	912062	Wear part	0.4 g
7	1	Valve Body 3-Way 2-Stem 9/16" 2.0 Imp	912072-I	Wear part	1775.9 g
8	3	Collar 9/16"	719100		28.9 g
9	3	Gland Nut 9/16" Imp	709107		14.1 g

General tolerances ISO 2768-1 mK Designs and drawings created and produced by the contractor are the contractor's intellectual property and may only be used for the purposes of the order. Weight 6.18 kg

Amendment: A) 0080, Air pressure redefined, 27.10.2021 AM	Replace for: -	Replaced by: -
	Drawn: 14.02.2019	AM
	Checked: 25.02.2019	RB
	Release: 25.02.2019	RB
	Index-release: 28.10.2021	RB

**Pneum. 2-stem Valve 9/16" NO 2.0 Imp**

Scale: 1 : 2

Max 4150 bar / 60,000 psi  
Normally open

**911180-I**

Index: A

Sheet-No.: 2  
No. of sheets: 2

**allfi**  
Components

ALLFI AG - RIEDENMATT 1 - CH-6370 STANS  
PHONE +41(0)41-618 05 05  
E-MAIL: sales@allfi.com

<http://www.allfi.com>