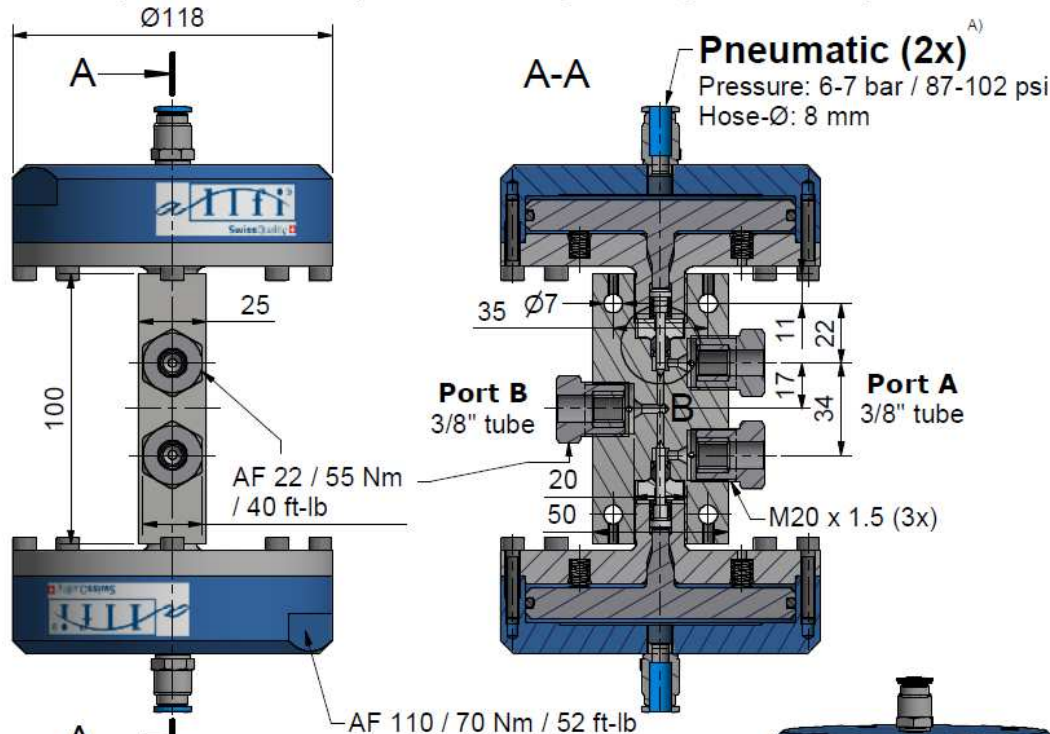


Assembling - Maintenance

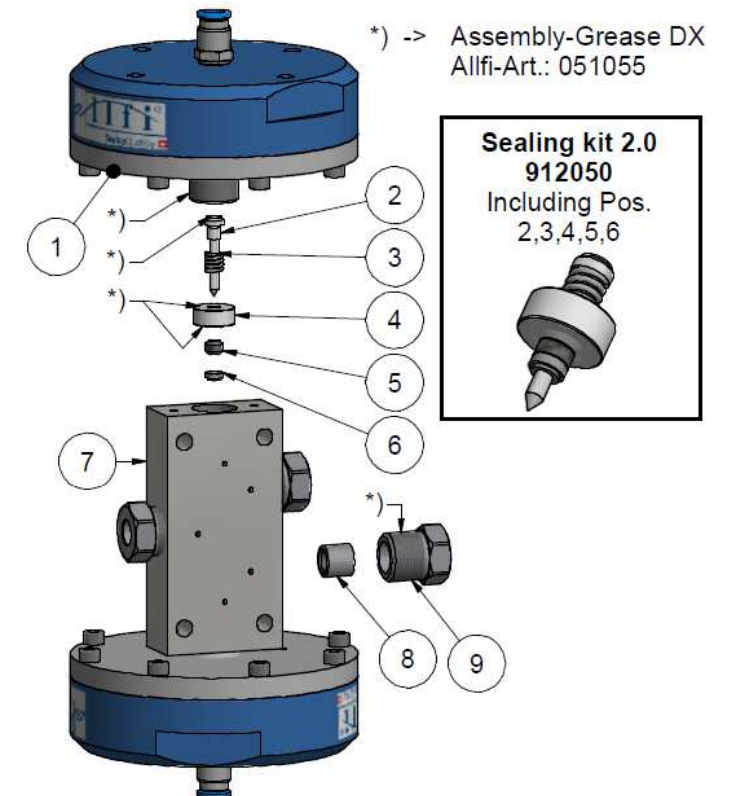
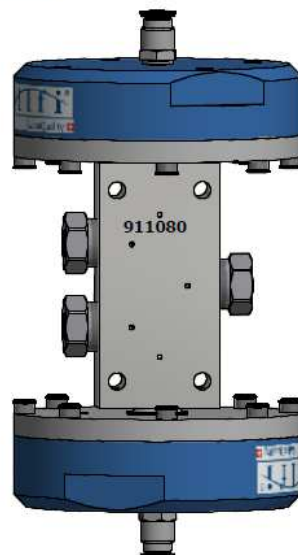
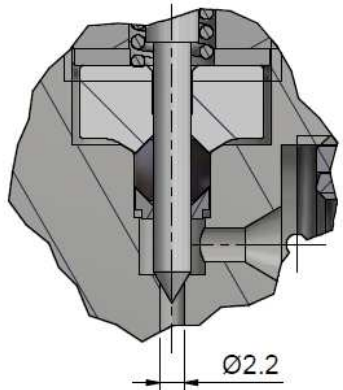
This drawing is appendix A of the installation and maintenance instruction "Pneumatic Valve 2.0".
 Complete installation and maintenance instruction refer to QR-Code or:
<https://www.allfi.com/en/services/downloads/product-manuals/>



- Pressure relief holes must not be covered or closed.
- Pneumatic cylinder must not be pressurized during assembly & disassembly.



Detail B (2 : 1)



Item	Qty	Description	Part-Number	Comments	Weight
1	2	Pneumatic Cylinder 2.0 NO	912290		2120.3 g
2	2	Needle complete 2.0	912076	Wear part	2.2 g
3	2	Spring	021033		0.1 g
4	2	Pressure plate 2.0	912053	Wear part	11.8 g
5	2	HP-Seal 2.0	912052	Wear part	1 g
6	2	Conical disc 2.0	912062	Wear part	0.4 g
7	1	Valve Body 2-Stem 3/8" 2.0	912068	Wear part	740.7 g
8	3	Collar 3/8"	713800		6.8 g
9	3	Gland Nut 3/8"	703800		48.1 g

General tolerances ISO 2768-1 m Designs and drawings created and produced by the contractor are the contractor's intellectual property and may only be used for the purposes of the order. Weight 5.18 kg

Amendment:	Replace for	-
A) 0080, Air pressure redefined, 27.10.2021 AM	Replaced by	-
	Drawn	23.11.2017 AM
	Checked	17.01.2018 RB
	Release	17.01.2018 RB
	Index-release	28.10.2021 RB

Pneum. 2-stem Valve 3/8" NO 2.0

Scale
1 : 2

Max 4150 bar / 60,000 psi
Normally open

allfi
Components
ALLFI AG - RIEDENMATT 1 - CH-6370 STANS
PHONE +41(0)41-618 05 05 - TELEFAX +41(0)41-618 05 10
E-MAIL: sales@allfi.com http://www.allfi.com

911080

Index	Sheet-	2
A	No. of	2
	sheets	