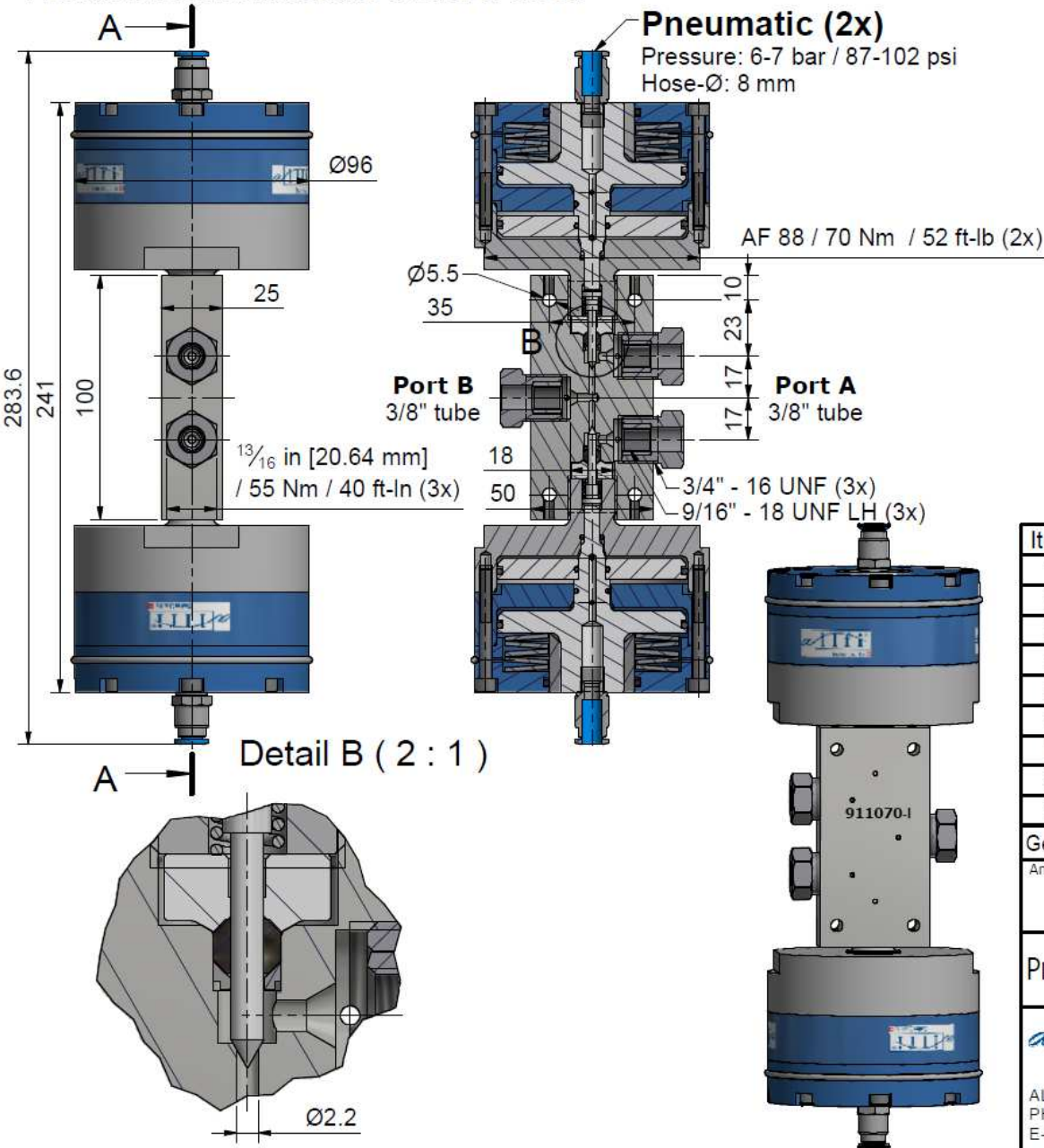


Assembling - Maintenance

This drawing is appendix A of the installation and maintenance instruction "Pneumatic Valve 2.0". Complete installation and maintenance instruction refer to QR-Code or: <https://www.allfi.com/en/services/downloads/product-manuals/>

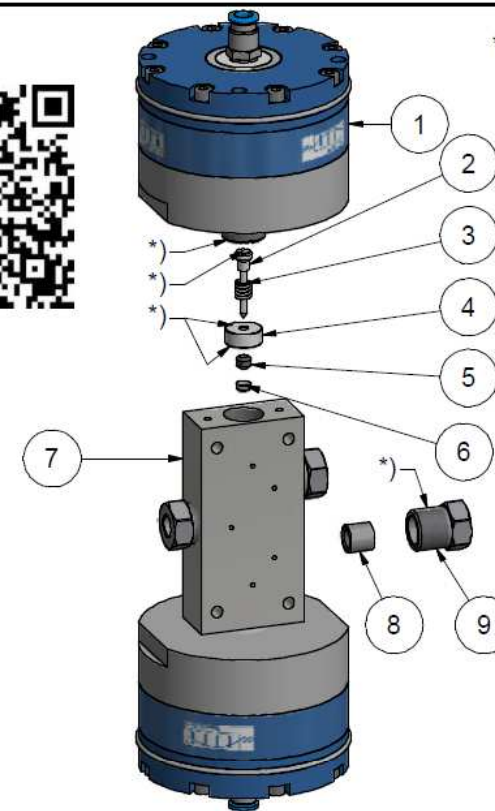


- Pressure relief holes must not be covered or closed.



*) -> Assembly-Grease DX
Allfi-Art.: 051055

Sealing kit 2.0
912050
Including Pos.
2,3,4,5,6



Item	Qty	Description	Part-Number	Comments	Weight
1	2	Pneumatic cylinder 2.0 NC	912190		2293.9 g
2	2	Needle complete 2.0	912076	Wear part	2.2 g
3	2	Spring	021033		0.1 g
4	2	Pressure plate 2.0	912053	Wear part	11.8 g
5	2	HP-Seal 2.0	912052	Wear part	1 g
6	2	Conical disc 2.0	912062	Wear part	0.4 g
7	1	Valve body 2-stem 3/8" 2.0 Imp	912068-I	Wear part	757.4 g
8	3	Collar 3/8"	713800		6.8 g
9	3	Gland Nut 3/8" Imp	703807		40.8 g

General tolerances ISO 2768-1 m Designs and drawings created and produced by the contractor are the contractor's intellectual property and may only be used for the purposes of the order. Weight 5.52 kg

Amendment:	Replace for	-
	Replaced by	-
Pneum. 2-stem valve 3/8" 2.0 NC Imp	Drawn	18.01.2018 AM
	Checked	25.01.2018 RB
	Release	25.01.2018 RB
	Index-release	

allfi Components
ALLFI AG - RIEDENMATT 1 - CH-6370 STANS
PHONE +41(0)41-618 05 05 - TELEFAX +41(0)41-618 05 10
E-MAIL: sales@allfi.com http://www.allfi.com

Scale 1 : 2

Max 4150 bar / 60,000 psi
Normally closed

911070-I	Index	-	Sheet- No.	2
	No. of sheets			2