

## Assembling - Maintenance

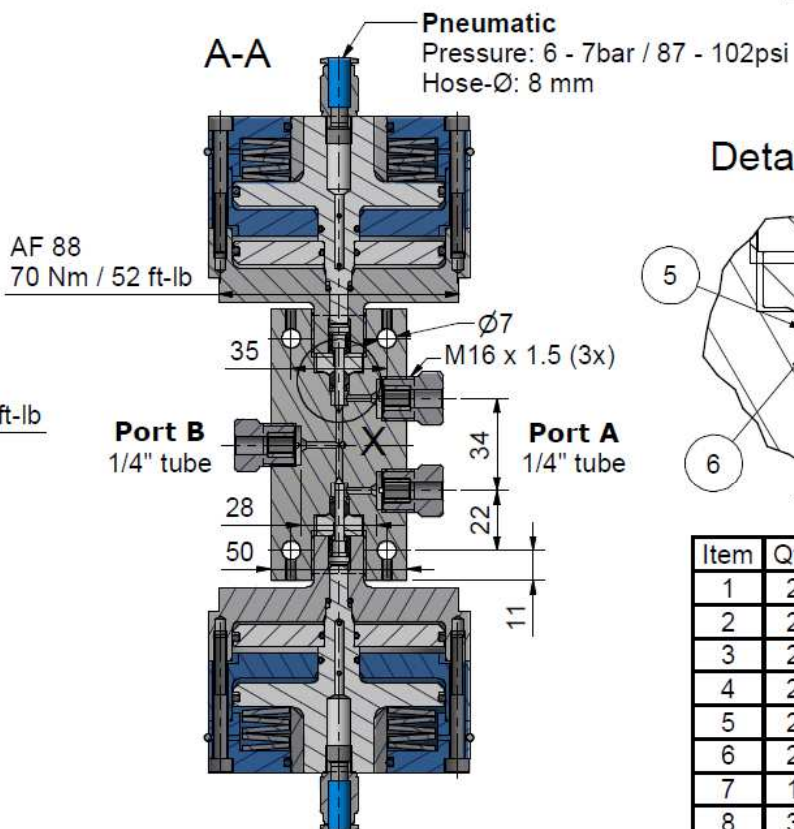
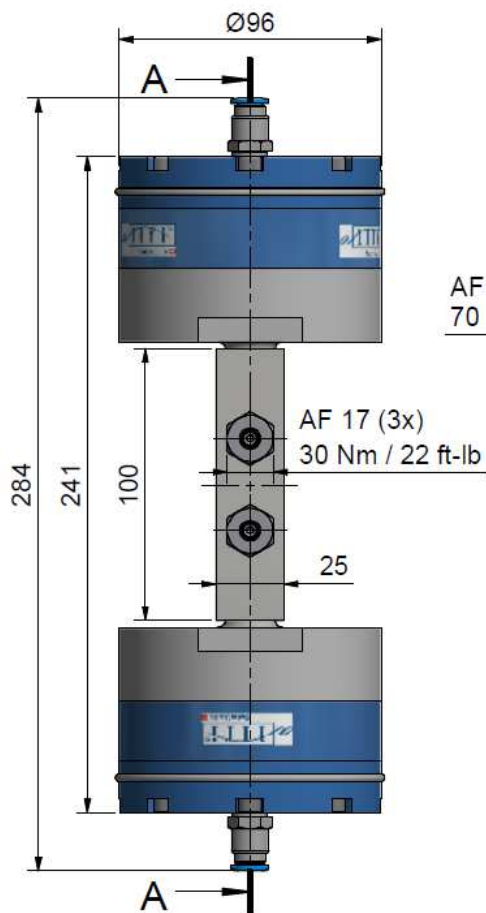
This drawing is appendix A of the installation and maintenance instruction "Pneumatic Valve 2.0".

Complete installation and maintenance instruction refer to QR-Code or:

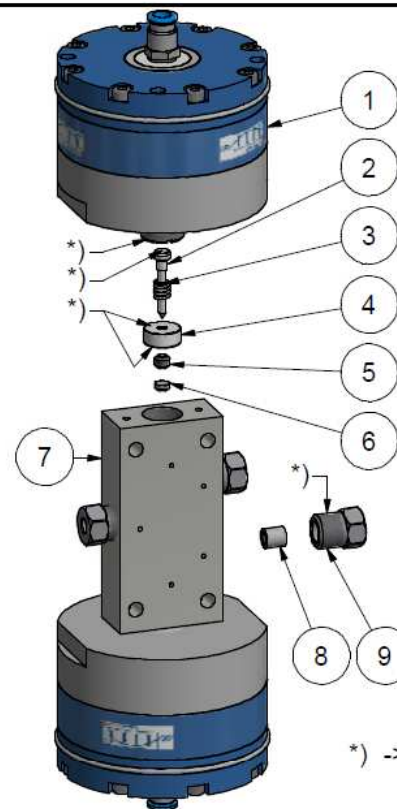
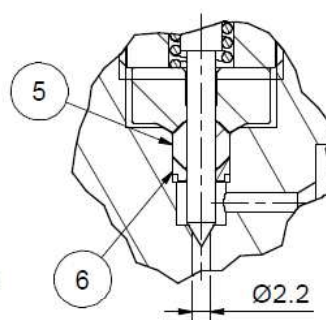
<https://www.allfi.com/en/services/downloads/product-manuals/>



- Pressure relief holes must not be covered or closed.



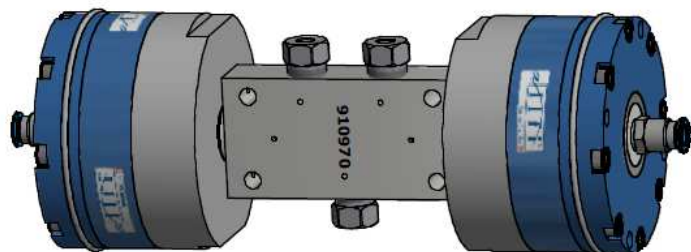
Detail X ( 3 : 2 )



**Sealing kit 2.0**  
912050  
Including Pos.  
2,3,4,5,6



\*) -> Assembly-Grease DX  
ALLFI-Art.: 051055



Item	Qty	Description	Part-Number	Comments	Weight
1	2	Pneumatic cylinder 2.0 NC	912190		2293.9 g
2	2	Needle complete 2.0	912076	Wear part	2.2 g
3	2	Spring	021033		0.1 g
4	2	Pressure plate 2.0	912053	Wear part	11.8 g
5	2	HP-Seal 2.0	912052	Wear part	1 g
6	2	Conical disc 2.0	912062	Wear part	0.4 g
7	1	Valve Body 3-Way 2-Stem 1/4" 2.0	912073	Wear part	792.6 g
8	3	Collar 1/4"	711403		3.1 g
9	3	Gland Nut 1/4"	701403		29.1 g

General tolerances ISO 2768-1 mK Designs and drawings created and produced by the contractor are the contractor's intellectual property and may only be used for the purposes of the order. Weight 5.51 kg

Amendment:	Replace for	-
	Replaced by	-
	Drawn	20.07.2017 AM
	Checked	24.04.2023 BT
	Release	24.04.2023 BT
	Index-release	

Pneum. 2-stem valve 1/4" NC 2.0

Scale  
1: 2

Max 4150 bar / 60,000 psi  
Normally closed



ALLFI AG - RIEDENMATT 1 - CH-6370 STANS  
PHONE +41(0)41-618 05 05 - TELEFAX +41(0)41-618 05 10  
E-MAIL: sales@allfi.com http://www.allfi.com

910970

Index	Sheet-No.	2
	No. of sheets	2