

Assembling - Maintenance

This drawing is appendix A of the installation and maintenance instruction "Hand valve 2.0".

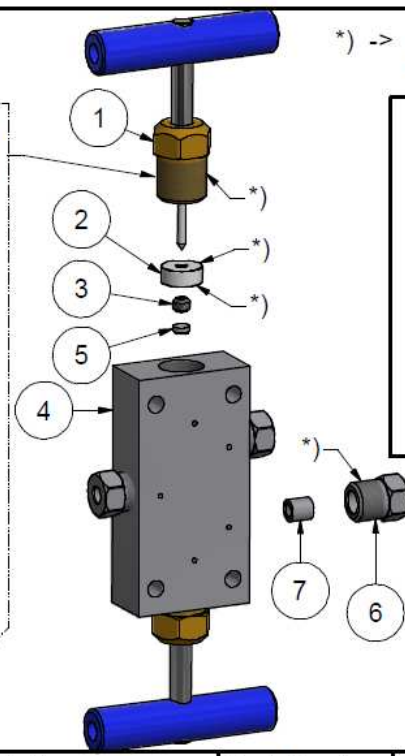
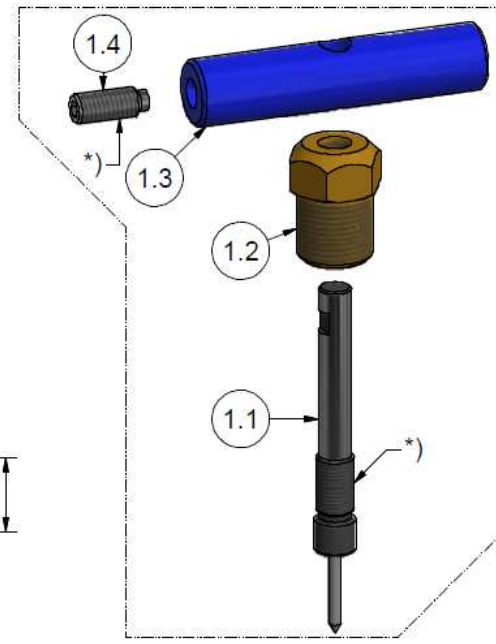
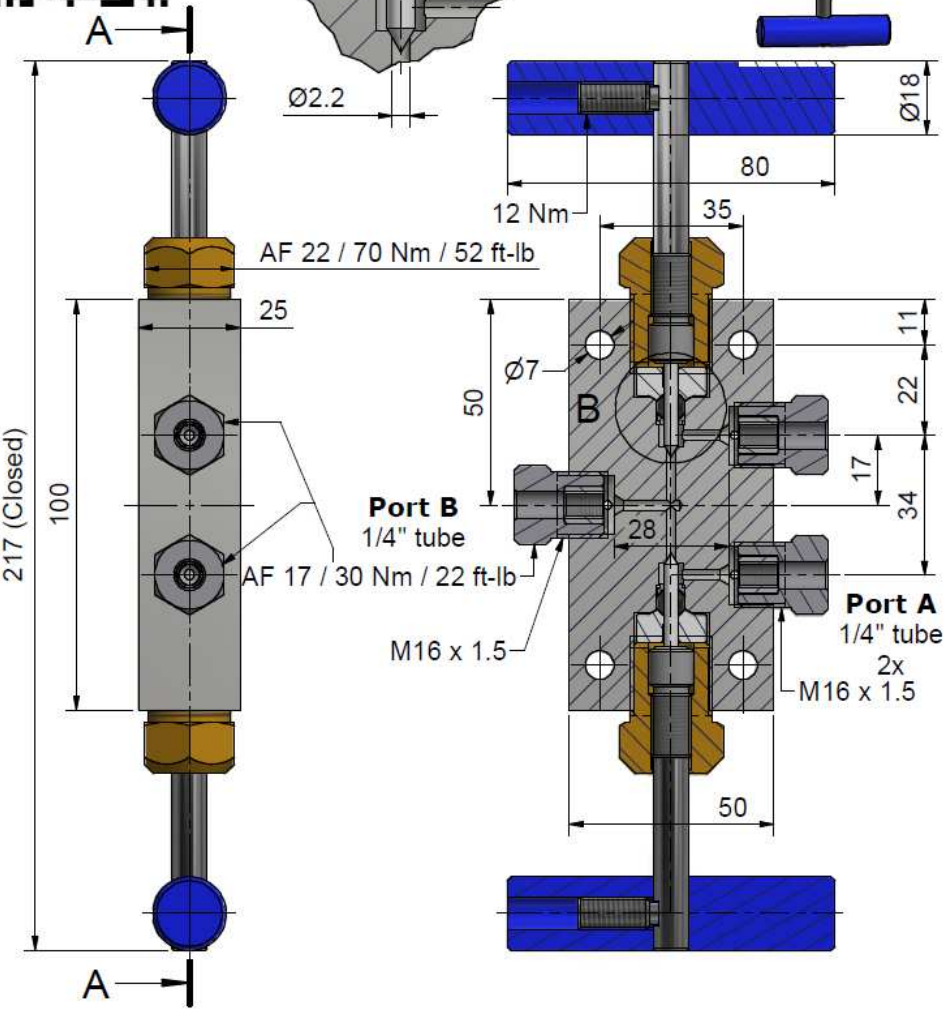
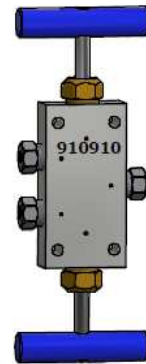
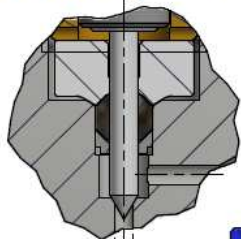
Complete installation and maintenance instruction refer to QR-Code or:

<https://www.allfi.com/en/services/downloads/product-manuals/>

- Pressure relief holes must not be covered or closed.



Detail B (3 : 2)



*) -> Assembly-Grease DX
Allfi-Art.: 051055

Sealing kit 2.0
912077
Including Pos.
1.1, 2, 3, 5

Item	Qty	Description	Part-Number	Comments	Weight
1	2	Spindle complete 2.0	910062		169.9 g
1.1	1	Needle with spindle 2.0	912059	Wear part	
1.2	1	Spindle Nut 2.0	912058		
1.3	1	Clamp Handle 2.0	912057		
1.4	1	Screw	000044		
2	2	Pressure plate 2.0	912053	Wear part	11.8 g
3	2	HP-Seal 2.0	912052	Wear part	1 g
4	1	Valve Body 3-Way 2-Stem 1/4" 2.0	912073	Wear part	794.6 g
5	2	Conical disc 2.0	912062	Wear part	0.4 g
6	3	Gland Nut 1/4"	701403		29.1 g
7	3	Collar 1/4"	711403		3.1 g

General tolerances ISO 2768-1 mK Designs and drawings created and produced by the contractor are the contractor's intellectual property and may only be used for the purposes of the order. Weight 1.26 kg

Amendment:	Replace for 912003, 910900
	Replaced by -
Drawn	02.08.2016 AM
Checked	02.05.2017 RB
Release	12.06.2017 BT
Index-release	

Hand Valve 3-Way 2 Stem 1/4" 2.0

Scale: 3 : 4

Max 4150 bar / 60,000 psi
Hand Valve 2.0

910910

ALLFI AG - RIEDENMATT 1 - CH-6370 STANS
PHONE +41(0)41-618 05 05
E-MAIL: sales@allfi.com

http://www.allfi.com

Index	Sheet-No.	No. of sheets
-	2	1