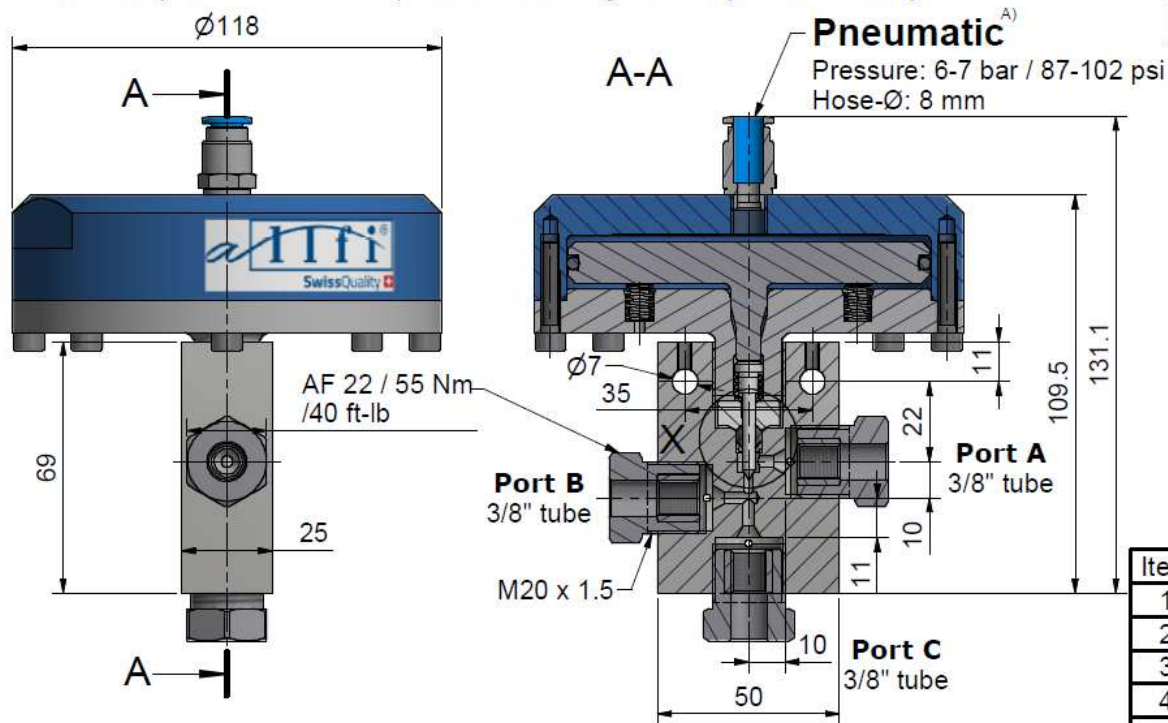


# Assembling - Maintenance

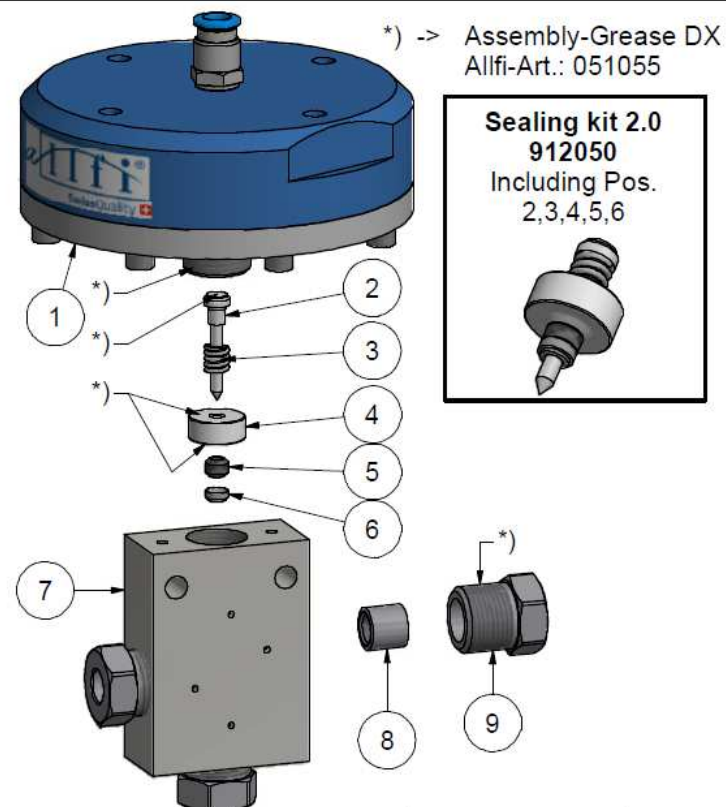
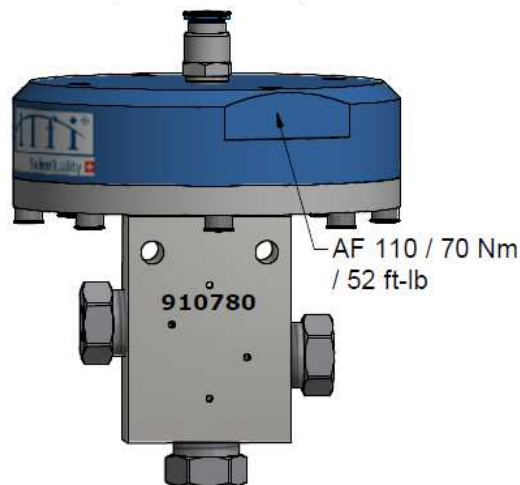
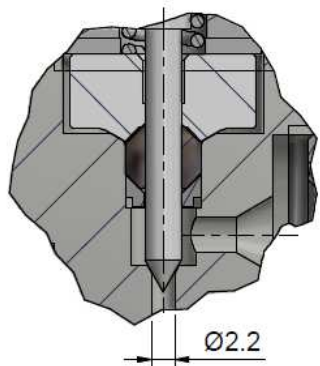
This drawing is appendix A of the installation and maintenance instruction "Pneumatic Valve 2.0". Complete installation and maintenance instruction refer to QR-Code or: <https://www.allfi.com/en/services/downloads/product-manuals/>



- Pressure relief holes must not be covered or closed.
- Pneumatic cylinder must not be pressurized during assembly & disassembly.



Detail X ( 2 : 1 )



Item	Qty	Description	Part-Number	Comments	Weight
1	1	Pneumatic Cylinder 2.0 NO	912290		2120.3 g
2	1	Needle complete 2.0	912076	Wear part	2.2 g
3	1	Spring	021033		0.1 g
4	1	Pressure plate 2.0	912053	Wear part	11.8 g
5	1	HP-Seal 2.0	912052	Wear part	1 g
6	1	Conical disc 2.0	912062	Wear part	0.4 g
7	1	Valve Body 3-Way 3/8" 2.0	912067	Wear part	507.5 g
8	3	Collar 3/8"	713800		6.8 g
9	3	Gland Nut 3/8"	703800		48.1 g

General tolerances ISO 2768-1 m Designs and drawings created and produced by the contractor are the contractor's intellectual property and may only be used for the purposes of the order. Weight -

Amendment:	Replace for -
A) 0080, Air pressure redefined, 27.10.2021 AM	Replaced by -
Drawn	23.03.2017 AM

Pneum. Valve 3-Way 3/8" NO 2.0	Scale	Checked	18.06.2019	RB
	2 : 3	Release	18.06.2019	RB
		Index-release	28.10.2021	RB

Max 4150 bar / 60,000 psi  
Normally open

**allfi Components**

ALLFI AG - RIEDENMATT 1 - CH-6370 STANS  
PHONE +41(0)41-618 05 05 - TELEFAX +41(0)41-618 05 10  
E-MAIL: sales@allfi.com <http://www.allfi.com>

910780	A	Index	Sheet-	2
		No. of sheets		2