

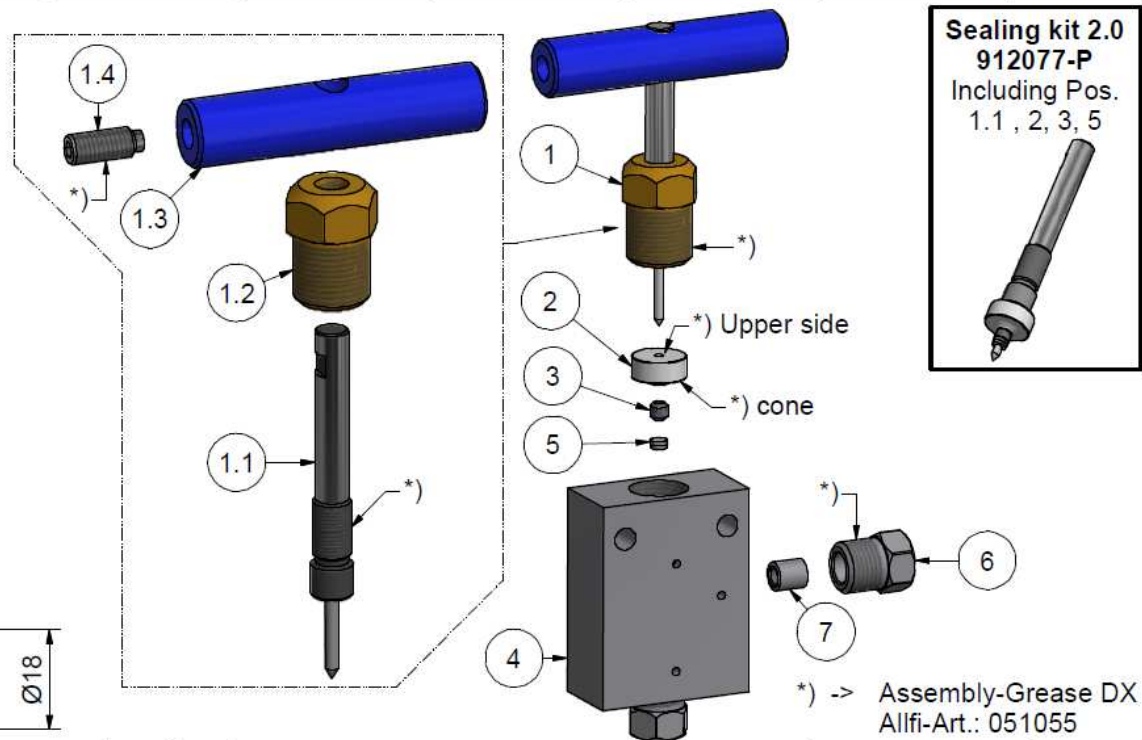
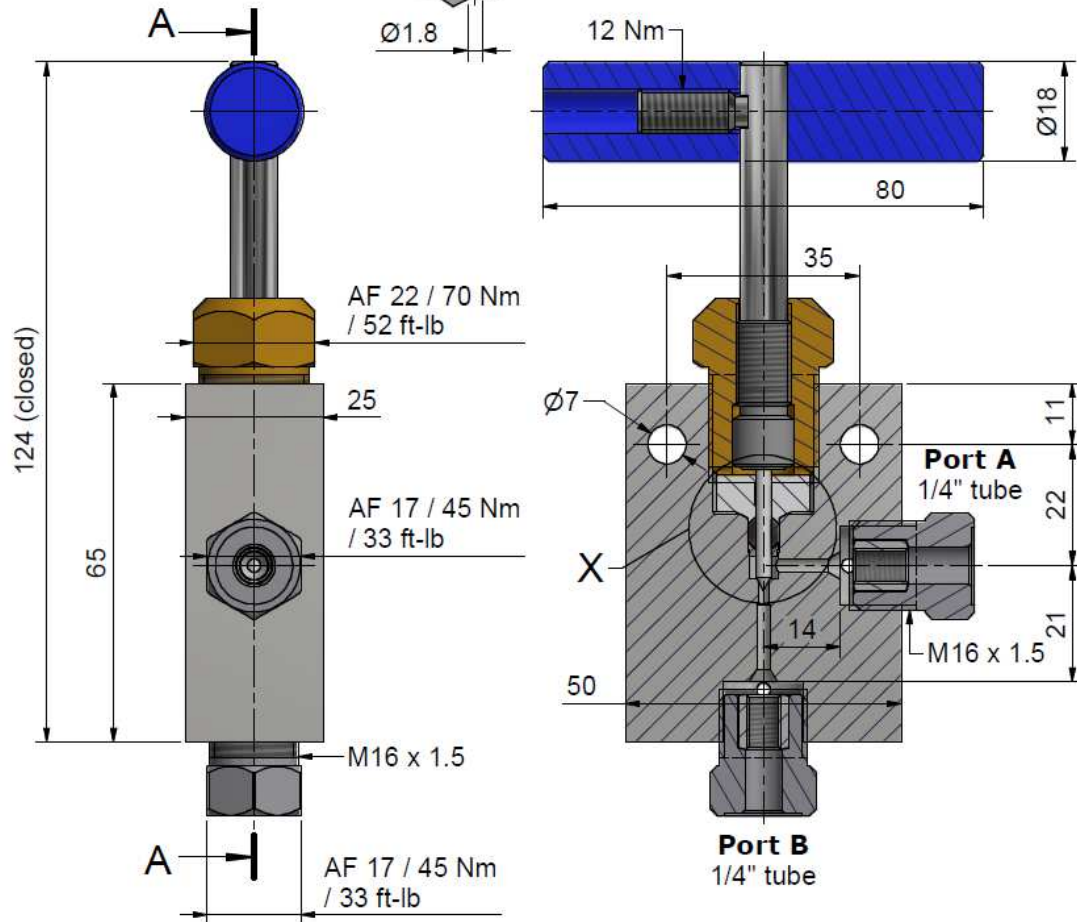
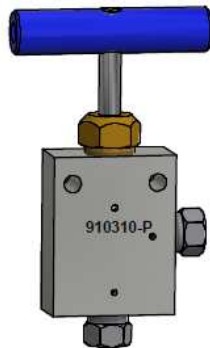
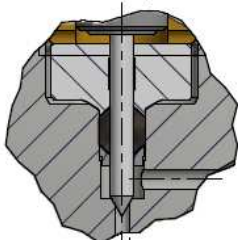
Assembling - Maintenance

This drawing is appendix A of the installation and maintenance instruction "Hand Valve 2.0".
The complete installation and maintenance instruction is hosted at:
<https://www.allfi.com/en/services/downloads/product-manuals/>

- Pressure relief holes must not be covered or closed.



Detail X (3 : 2)



| Item | Qty | Description | Part-Number | Comments | Weight |
|------|-----|---------------------------|-------------|-----------|---------|
| 1 | 1 | Spindle complete 2.0 | 910062-P | | 169.4 g |
| 1.1 | 1 | Needle with spindle 2.0 | 912059-P | Wear part | 39.4 g |
| 1.2 | 1 | Spindle Nut 2.0 | 912058 | | 75.1 g |
| 1.3 | 1 | Clamp Handle 2.0 | 912057 | | 48.2 g |
| 1.4 | 1 | Screw | 000044 | | 6.7 g |
| 2 | 1 | Pressure plate 2.0 | 912053-P | Wear part | 12.1 g |
| 3 | 1 | HP-Seal 2.0 | 912052-P | Wear part | 0.6 g |
| 4 | 1 | Valve Body angle 1/4" 2.0 | 912063-P | Wear part | 537.3 g |
| 5 | 1 | Conical disc 2.0 | 912062-P | Wear part | 0.2 g |
| 6 | 2 | Gland Nut 1/4" 90.000psi | 701403-P | | 27.9 g |
| 7 | 2 | Collar 1/4" | 711403 | | 3.1 g |

General tolerances ISO 2768-1 m Designs and drawings created and produced by the contractor are the contractor's intellectual property and may only be used for the purposes of the order. Weight 0.78 kg

| | | |
|------------|----------------|---------------|
| Amendment: | Replace for: | |
| | Replaced by: | |
| | Drawn: | 25.05.2022 AM |
| | Checked: | 06.07.2022 BT |
| | Release: | 18.03.2024 PH |
| | Index-release: | |

Hand Valve 2-Way Angle 1/4" 2.0

Scale 1 : 1

Max 6200 bar / 90,000 psi

910310-P

ALLFI AG - RIEDENMATT 1 - CH-6370 STANS
PHONE +41(0)41-618 05 05 - TELEFAX +41(0)41-618 05 10
E-MAIL: sales@allfi.com http://www.allfi.com

Index - Sheet-No. 2 No. of sheets 2