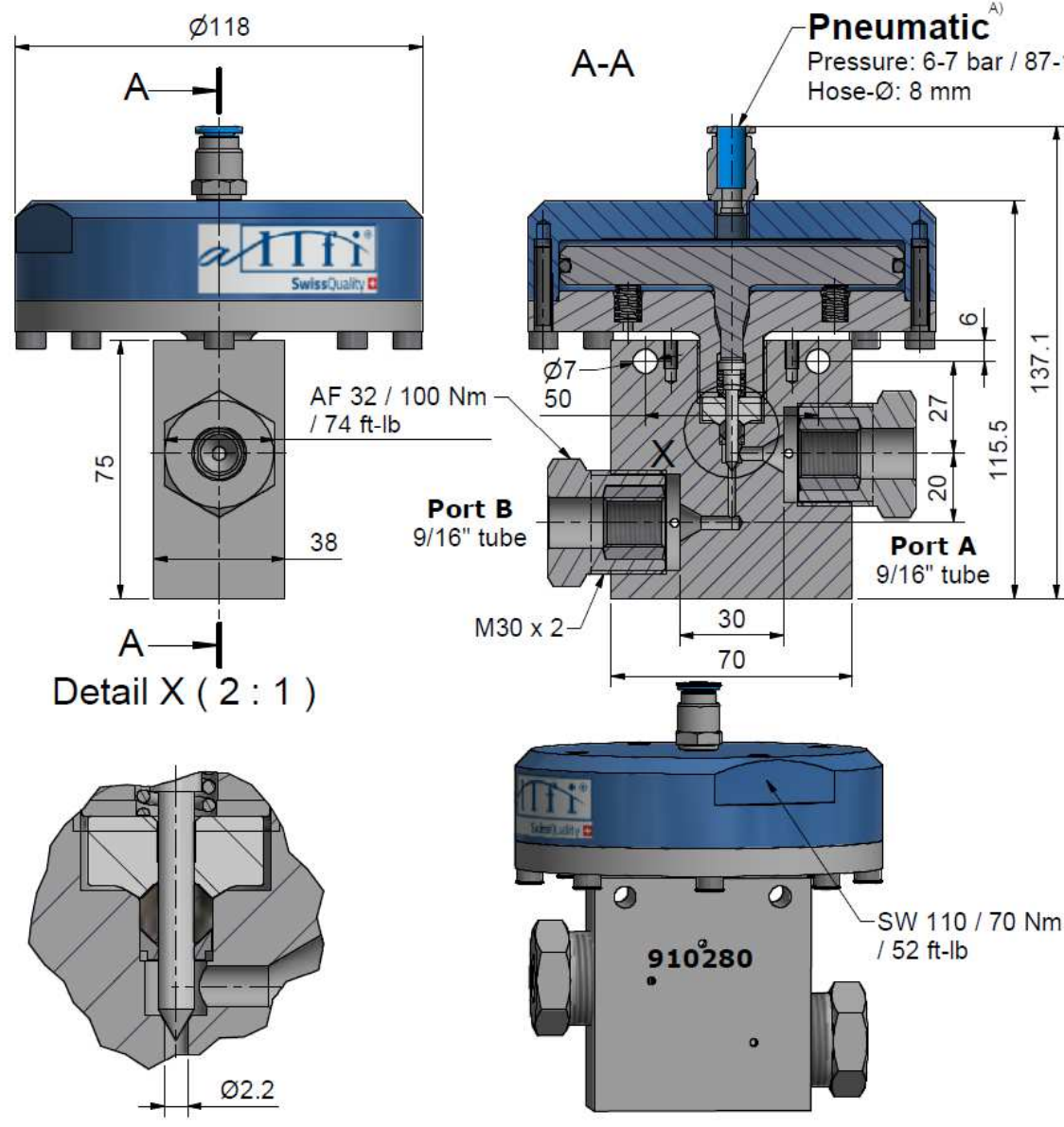
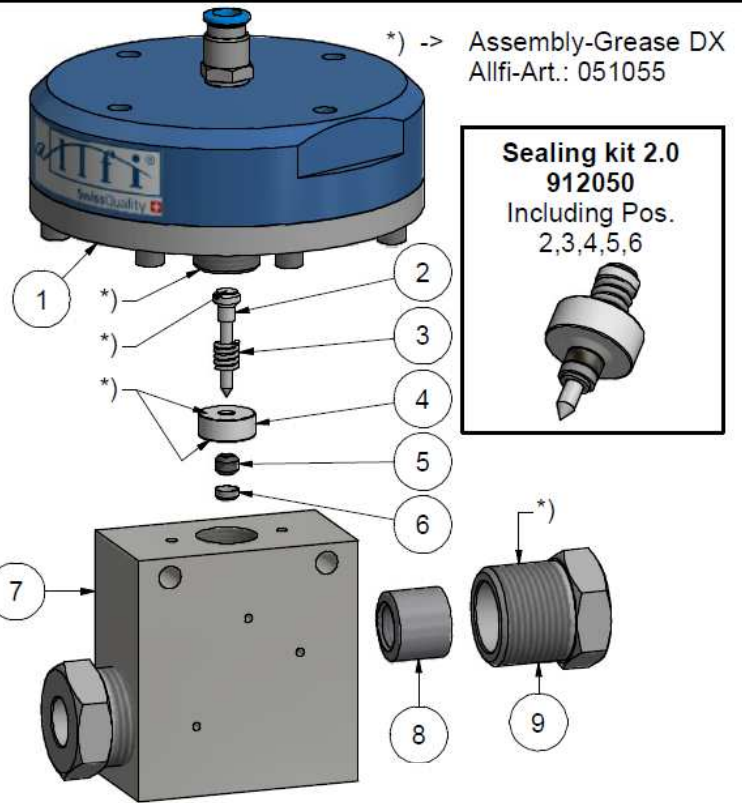


Assembling - Maintenance

This drawing is appendix A of the installation and maintenance instruction "Pneumatic Valve 2.0". Complete installation and maintenance instruction refer to QR-Code or: <https://www.allfi.com/en/services/downloads/product-manuals/>

- Pressure relief holes must not be covered or closed.
- Pneumatic cylinder must not be pressurized during assembly & disassembly.



Item	Qty	Description	Part-Number	Comments	Weight
1	1	Pneumatic Cylinder 2.0 NO	912290		2120.3 g
2	1	Needle complete 2.0	912076	Wear part	2.2 g
3	1	Spring	021033		0.1 g
4	1	Pressure plate 2.0	912053	Wear part	11.8 g
5	1	HP-Seal 2.0	912052	Wear part	1 g
6	1	Conical disc 2.0	912062	Wear part	0.4 g
7	1	Valve Body straight 9/16" 2.0	912069	Wear part	1281.2 g
8	2	Collar 9/16"	719100		28.9 g
9	2	Gland Nut 9/16"	709100		132.8 g

General tolerances ISO 2768-1 m		Designs and drawings created and produced by the contractor are the contractor's intellectual property and may only be used for the purposes of the order.		Weight
Amendment: A) 0080, Air pressure redefined, 27.10.2021 AM		Replace for	-	
		Replaced by	-	
		Drawn	14.03.2017	AM
		Checked	15.03.2017	BT
		Release	09.10.2019	RB
		Index-release	28.10.2021	RB

Pneum. Valve 2-Way Straight 9/16" NO 2.0

Scale 2 : 3

Max 4150 bar / 60,000 psi
Normally open

910280

ALLFI AG - RIEDENMATT 1 - CH-6370 STANS
PHONE +41(0)41-618 05 05 - TELEFAX +41(0)41-618 05 10
E-MAIL: sales@allfi.com http://www.allfi.com

Index	Sheet-No.	2
A	No. of sheets	2