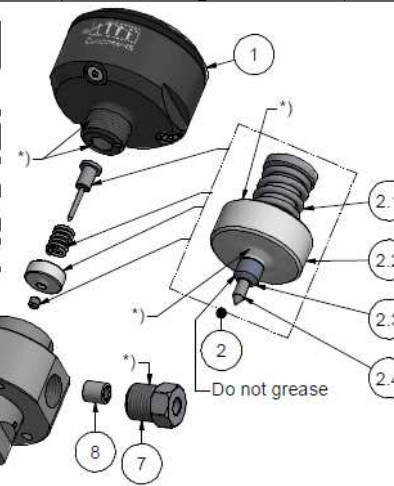


## Assembling - Maintenance

This drawing is appendix A of the installation and maintenance instruction "Cutting head type IV 2.0".

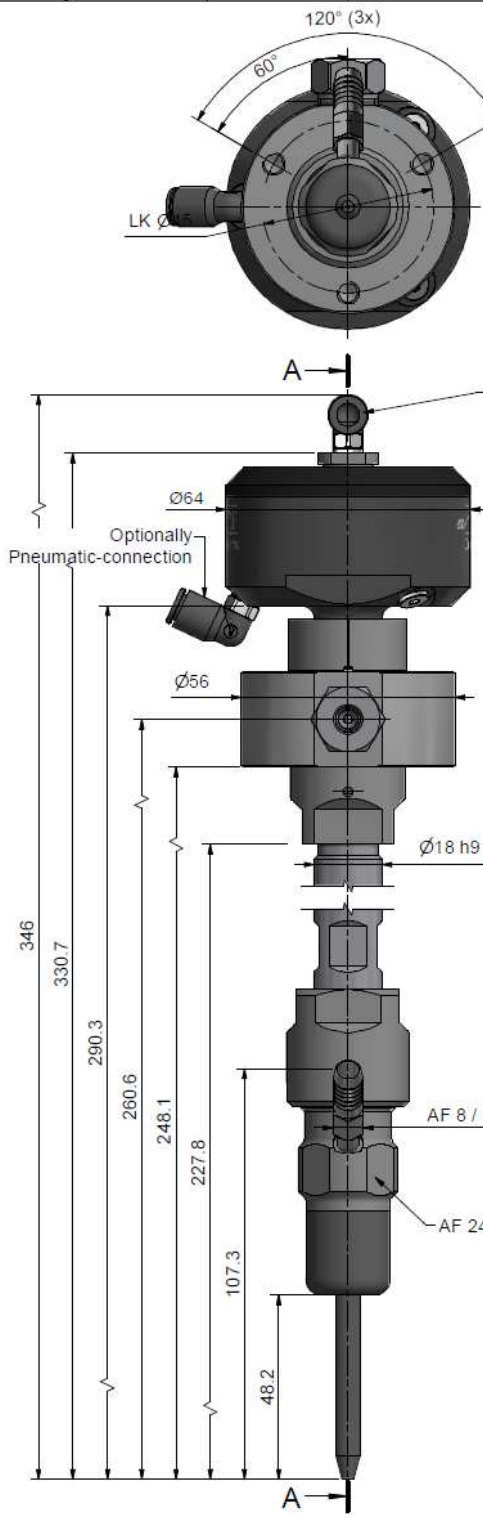
Complete installation and maintenance instruction refer to QR-Code or:  
<https://www.allfi.com/en/services/downloads/product-manuals/>

- Pneumatic-cylinder must be pressurised with air during assembling and disassembling of valve case and collimation tube.
- Stroke has to be 0.6 - 0.8 mm / 0.0235 - 0.0315", air pressure 7bar - 100 psi, adjustment range +/- 1 revolution.
- Function test with several open and closed cycles.
- After finishing maintenance flush the complete cutting head without nozzle at < 500 bar / 7200 psi.
- Pressure relief holes must not be covered or closed.
- Use only orifice Typ 94



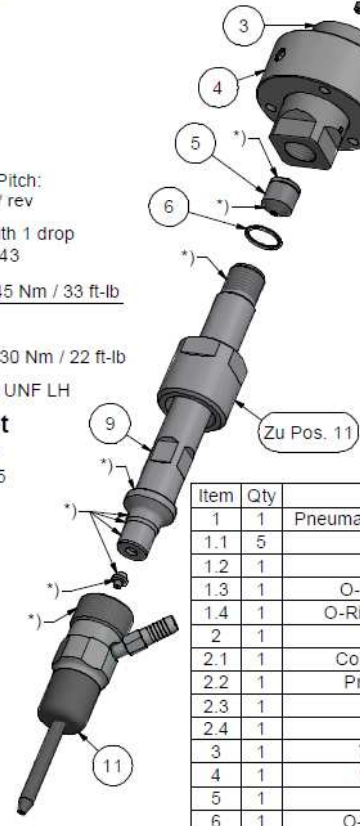
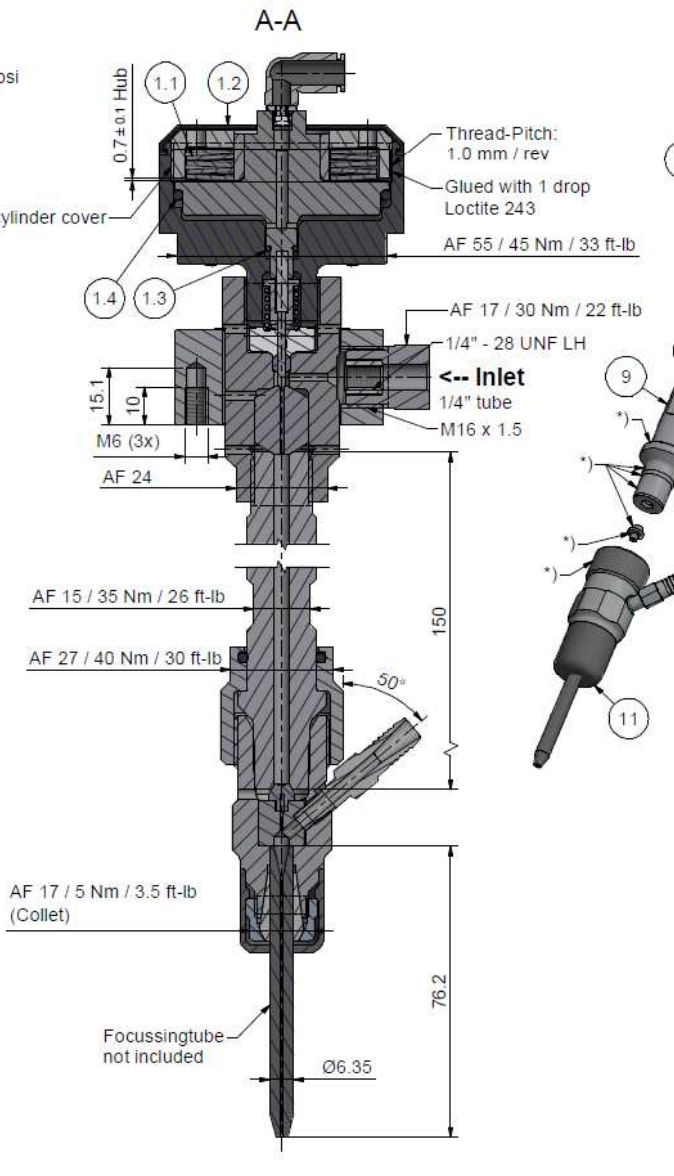
Do not grease

\*) -> Assembly-Grease DX  
Allfi-Art.: 051055



### Pneumatic

Pressure: 6-7 bar / 88-100 psi  
 Hose-Ø: 6 mm  
 Pressure at stroke-adjustment: 7 bar / 100 psi



Item	Qty	Description	Part-Number	Comments	Weight
1	1	Pneumatic cylinder type IV 2.0	908290		340.2 g
1.1	5	Disc Spring	021001		14.3 g
1.2	1	Rubber cover	908092		3.9 g
1.3	1	O-Ring D=5.5 x 1.5	010006		0 g
1.4	1	O-Ring D=52.07 x 2.62	010090		0.9 g
2	1	Seal Kit 2.0	901432	Wear part	15.6 g
2.1	1	Compression Spring	021006		1.4 g
2.2	1	Pressure plate 2.0	900627		11 g
2.3	1	HP-seal 2.0	900622		0.1 g
2.4	1	Valve needle	901416		3.1 g
3	1	Valve case 2.0	908010	Wear part	235.2 g
4	1	Coupling Ring	900074		305.8 g
5	1	Valve Seat	900014	Wear part	17.2 g
6	1	O-Ring D=14 x 1.5	010013		0.1 g
7	1	Gland Nut 1/4"	701403		29.1 g
8	1	Collar 1/4"	711403		3.1 g
9	1	Collimation tube L=150 CL-IV	970078	Wear part	263.4 g
10	1	Orifice Type 94	0094xx	Not included	1.1 g
11	1	Abrasive Cutting Head Centerline Type IV	950880		269.4 g

General tolerances ISO 2768-1 mK Designs and drawings created and produced by the contractor are the contractor's intellectual property and may only be used for the purposes of the order. Weight 1.48 kg

Amendment:	Replace for -
	Replaced by -
Drawn 28.05.2018 AM	
Checked 25.06.2018 RB	
Release 25.06.2018 RB	
Index-release	

Cutting head type IV 2.0 AWJ 150

Scale 1 : 1

Max. 4150 bar / 60,000 psi

**allfi** Components

ALLFI AG - RIEDENMATT 1 - CH-8370 STANS  
 PHONE +41(0)41-818 05 05  
 E-MAIL: sales@allfi.com http://www.allfi.com

908303

Index - Sheet- No. of sheets 2