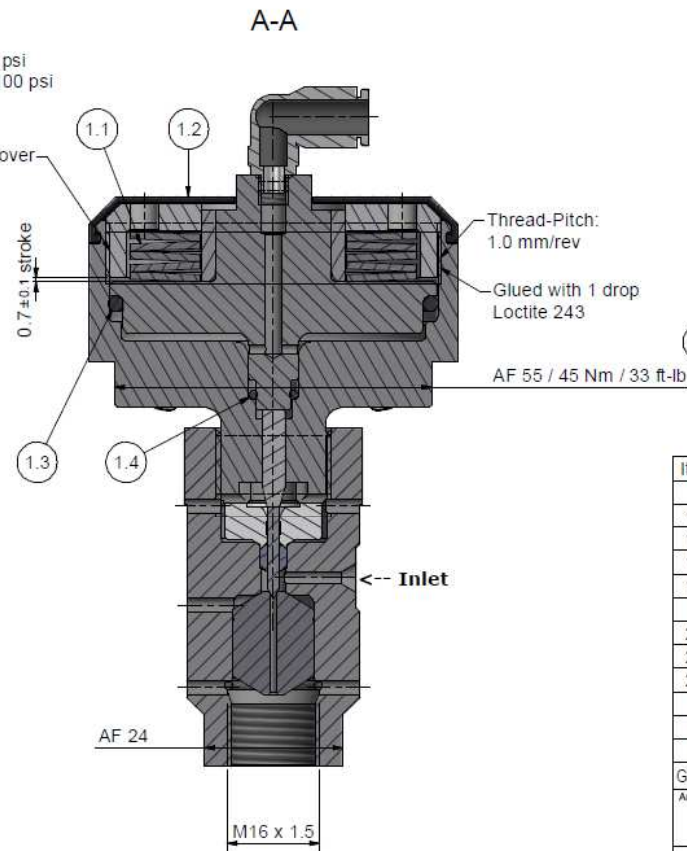
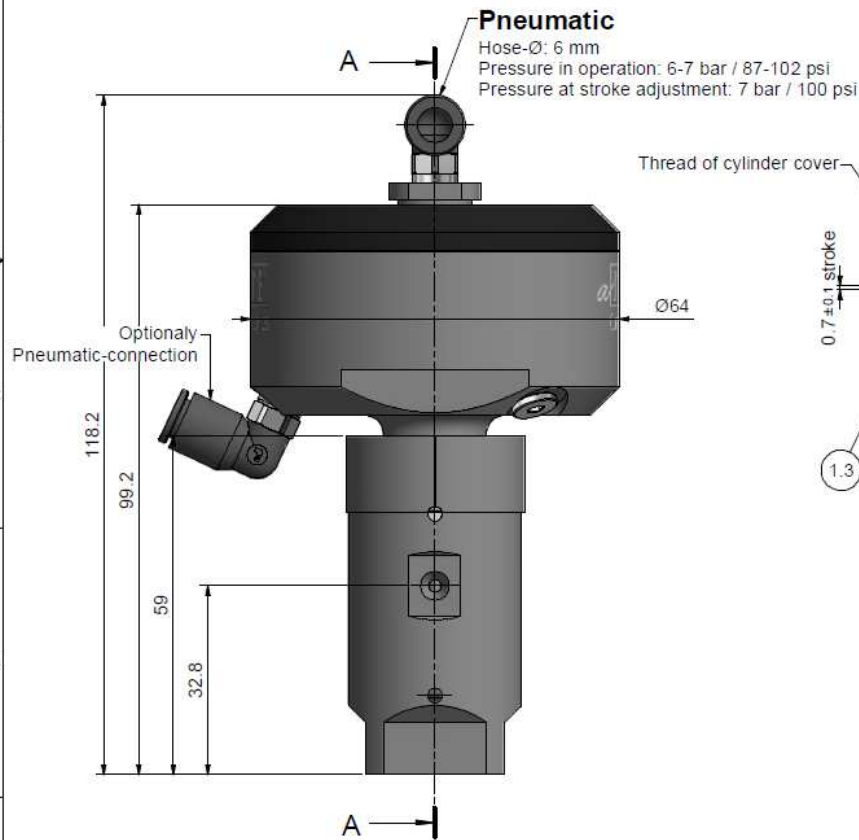
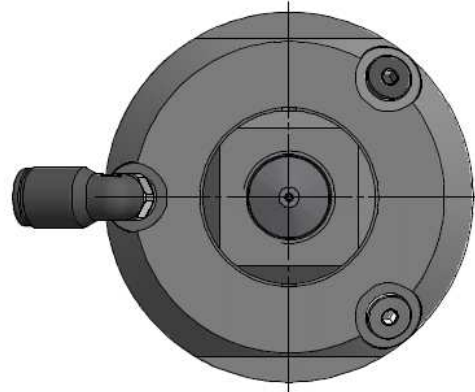


Assembling - Maintenance

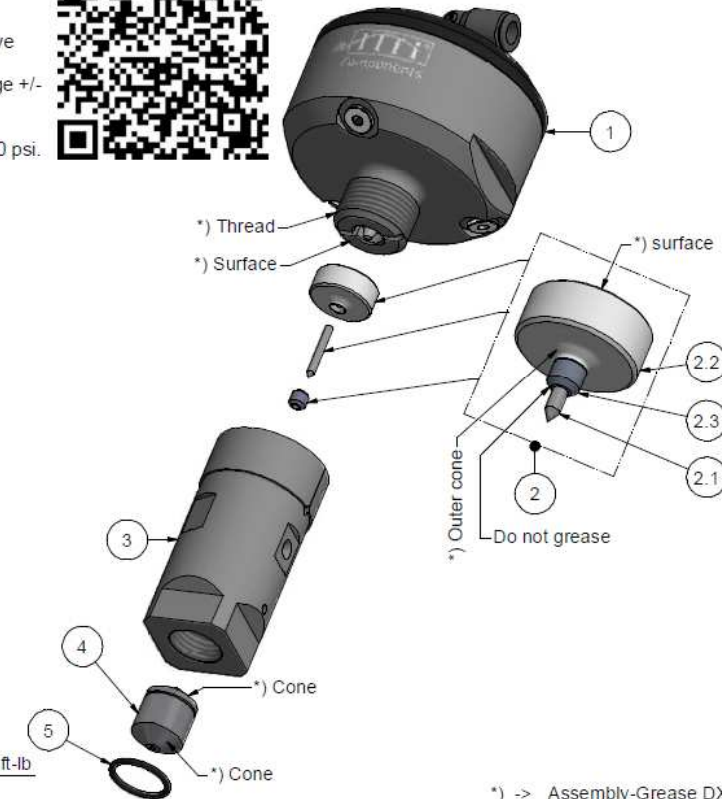
This drawing is appendix A of the installation and maintenance instruction "Cutting head type V 2.0".
Complete installation and maintenance instruction refer to QR-Code or:
<https://www.allfi.com/en/services/downloads/product-manuals/>



- Pneumatic-cylinder must be pressurised with air during assembling and disassembling of valve case and collimation tube.
- Stroke has to be 0.6 - 0.8 mm / 0.0235 - 0.0315", air pressure 7bar - 100 psi, adjustment range +/- 1 revolution.
- Function test with several open and closed cycles.
- After finishing maintenance flush the complete cutting head without nozzle at < 500 bar / 7200 psi.
- Pressure relief holes must not be covered or closed.



Torque Collimation tube: 35 Nm / 22 ft-lb



Item	Qty	Description	Part-Number	Comments	Weight
1	1	Pneumatic cylinder type V 2.0	908090		343.3 g
1.1	5	Disc Spring	021001		14.3 g
1.2	1	Rubber cover	908092		3.9 g
1.3	1	O-Ring D=52.07 x 2.62	010090		0.9 g
1.4	1	O-Ring D=5.5 x 1.5	010006		0 g
2	1	Seal Kit 2.0	901433	Wear part	11.5 g
2.1	1	Needle	900616		0.4 g
2.2	1	Pressure plate 2.0	900627		11 g
2.3	1	HP-seal 2.0	900622		0.1 g
3	1	Valve case 2.0	908010	Wear part	235.2 g
4	1	Valve Seat	900014	Wear part	17.2 g
5	1	O-Ring D=14 x 1.5	010013		0.1 g

General tolerances ISO 2768-1 mK Designs and drawings created and produced by the contractor are the contractor's intellectual property and may only be used for the purposes of the order.

Amendment:	Replaced by	Replaced by
	Drawn	24.05.2022 AM
	Checked	24.05.2022 Gb
	Release	24.05.2022 GB
	Index-release	

Cutting head type V 2.0 PWJ SP35

Scale
1 : 1

Max. 4150 bar / 60,000 psi



ALLFI AG - RIEDENMATT 1 - CH-8370 STANS
PHONE +41(0)41-818 05 05 - TELEFAX +41(0)41-818 05 10
E-MAIL: sales@allfi.com http://www.allfi.com

908054

Index	Sheet-	2
-	No. of	2
	sheets	