



QUANTUM VP™ Pump

QUANTUM VP™ Features

- **Easiest to Maintain** – the superior design includes visual diagnostics, provides for easy, ergonomic access to the pump when maintenance is required and quick-change seal components allow for the fastest seal change in the industry
- **Most Efficient Waterjet Pump** – Up to 60% more energy efficient than standard hydraulic intensifiers. Also, the much smaller footprint of the QUANTUM™ pump provides for efficient floor space utilization – over 50% less when compared to the average hydraulic pump
- **Superior Pump for Environmental Considerations** – use up to 70% less cooling water than standard hydraulic intensifiers. This pump uses far less water and electricity to operate, combined with minimal oil usage compared to competitive products, makes it the best pump available for the environment
- **Most Cost Efficient** – the combination of less overall downtime including unplanned downtime; fewer required component changes; fastest seal change timing; and requiring less electricity, cooling water and oil, all combine to make this pump the most cost-efficient high-pressure pump available



Specification

	Quantum VP 15/52	
Max. Operating Pressure	3585 Bar	52,000 PSI
Max. Flow Rate	1,9 l/m	0,5 Gpm
Cooling Water Consumption	3,0 l/m	0,8 Gpm
Footprint	1,3 x 0,5 x 1,1 m	51 x 20 x 43 in
Weight	410 Kg	903 lb

For more information

ALLFI website : allfi.com
ALLFI webshop : allfiwaterjetparts.com
Contact us : info@allfi.com

Superior Waterjet Parts



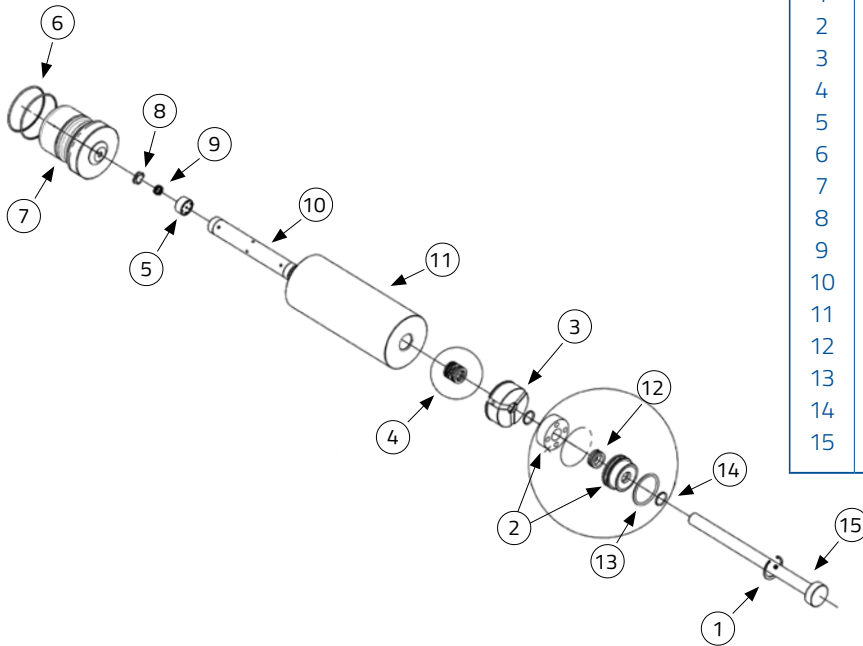


High Pressure Pumps

QUANTUM VP™ Pump

allfi
Components

Spare Parts and Tools



Part Number		Description
Spare Parts		
1	TE-501-1-0010	Internal Circlip
2	TE-SP1109	Seal Housing & Polyurethane Pad
3	TE-SP1115	Guide Bush Assembly with O-ring
4	TE-SP1052	HP Seal Kit
5	TE-EL-72	Check Valve Housing
6	TE-500-5-0042	O-Ring- BS033
7	TE-SP-71-7	Sealing Head
8	TE-SP-73-2	Check Valve Poppet
9	TE-500-12-0040	LP Check Valve Spring
10	TE-EL-69-2	Cylinder Liner
11	TE-EL-49-2	Cylinder Body
12	TE-SP1053	Oil Seal
13	TE-500-5-0065	O-Ring
14	TE-500-5-0058	O-Ring
15	TE-EL-46	Plunger

For more information

ALLFI website : allfi.com
ALLFI webshop : allfiwaterjetparts.com
Contact us : info@allfi.com

Superior Waterjet Parts



© 12/2020 ALLFI