



QUANTUM NXT™ Pump

QUANTUM NXT™ Features

- **Easiest to Maintain** – the superior design includes visual diagnostics, provides for easy, ergonomic access to the pump when maintenance is required and quick-change seal components allow for the fastest seal change in the industry
- **Most Efficient Waterjet Pump** – Up to 60% more energy efficient than standard hydraulic intensifiers. Also, the much smaller footprint of the QUANTUM™ pump provides for efficient floor space utilization – over 50% less when compared to the average hydraulic pump
- **Superior Pump for Environmental Considerations** – use up to 70% less cooling water than standard hydraulic intensifiers. This pump uses far less water and electricity to operate, combined with minimal oil usage compared to competitive products, makes it the best pump available for the environment
- **Most Cost Efficient** – the combination of less overall downtime including unplanned downtime; fewer required component changes; fastest seal change timing; and requiring less electricity, cooling water and oil, all combine to make this pump the most cost-efficient high-pressure pump available
- **Industry 4.0 Ready** – ALLFI technicians can provide remote assistance by logging into the pump to perform sophisticated diagnostics in real time



Specification

	Quantum 37/66	
Max. Operating Pressure	4550 Bar	66,000 PSI
Max. Flow Rate	3,8 l/m	1,0 Gpm
Cooling Water Consumption	6,0 l/m	1.6 Gpm
Footprint	1,8 x 0,66 x 1,27 m	72 x 26 x 40 in
Weight	628 Kg	1385 lb

For more information

ALLFI website : allfi.com
ALLFI webshop : allfiwaterjetparts.com
Contact us : info@allfi.com

Superior Waterjet Parts

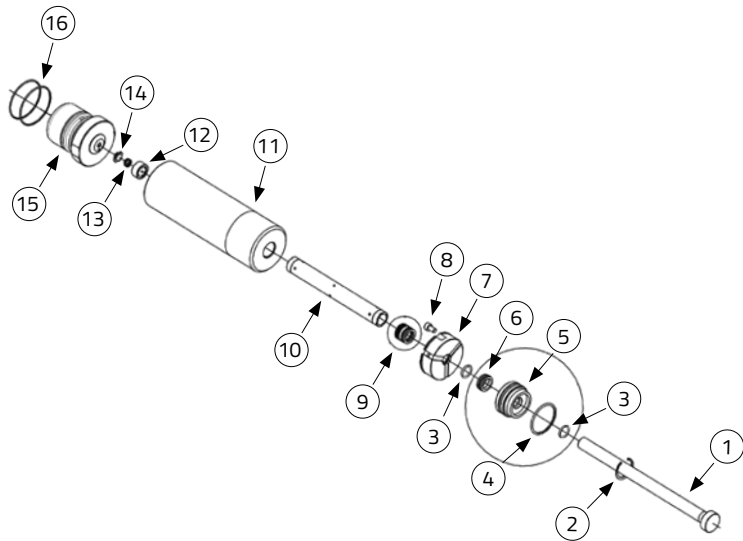




High Pressure Pumps

QUANTUM NXT™ Pump

Spare Parts and Tools



Part Number		Description
Spare Parts		
1	TE-SP-46-3	Plunger
2	TE-501-1-0010	Internal Circlip
3	TE-500-5-0049	O-Ring
4	TE-500-5-0089	O-Ring
5	TE-SP4-45-175	Seal Housing
6	TE-SP1042	Wiper Seal
7	TE-SP4-46-175	Guide Bush
8	TE-108-1-0610	M6 x 10 SHCS Black
9	TE-SP1060	HP Seal Kit
10	TE-SP4-69-175	Cylinder Liner
11	TE-SP-49-13	Cylinder Body
12	TE-SP-72-7	Check Valve Housing
13	TE-500-12-0040	LP Check Valve Spring
14	TE-SP-73-2	Check Valve Poppet
15	TE-SP-71-9	Sealing Head
16	TE-500-12-0042	O-Ring-BS033

For more information

ALLFI website : allfi.com
ALLFI webshop : allfiwaterjetparts.com
Contact us : info@allfi.com

Superior Waterjet Parts

